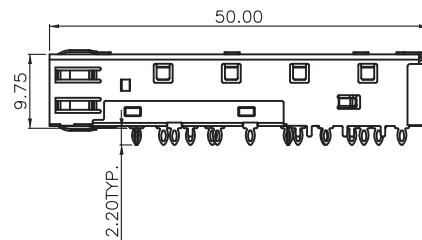
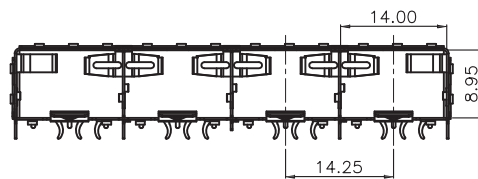
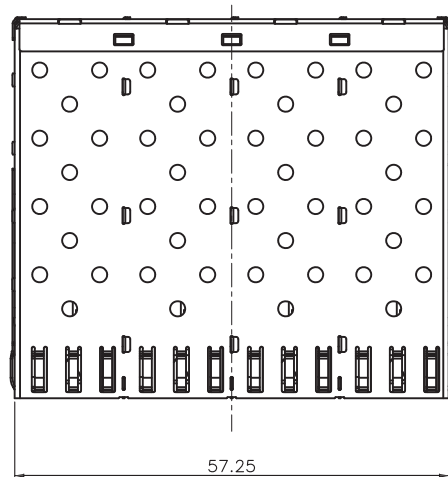


# SCHEMATICS



NOTE:  
 1,MECHANICAL:  
 CAGE MATERIAL: COPPER ALLOY,T=0.25mm.  
 2,TEMPERATURE:  
 OPERATION: -40°C~ +85°C  
 STORAGE: -55°C~ +85°C  
 3,ROHS COMPLIANT.



Drafted by:XiaoMing

Dimensions:mm  
 Unless otherwise specified, all tolerances are  $\pm 0.25$

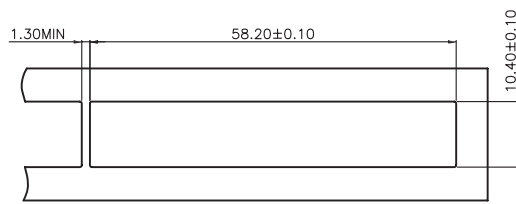
SFP Cage 1x4 port

Approved By: TSLEE

Part No:SFP014PF

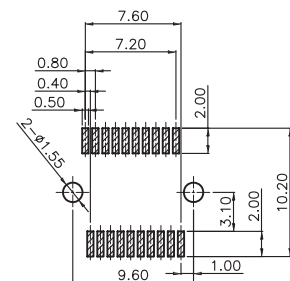
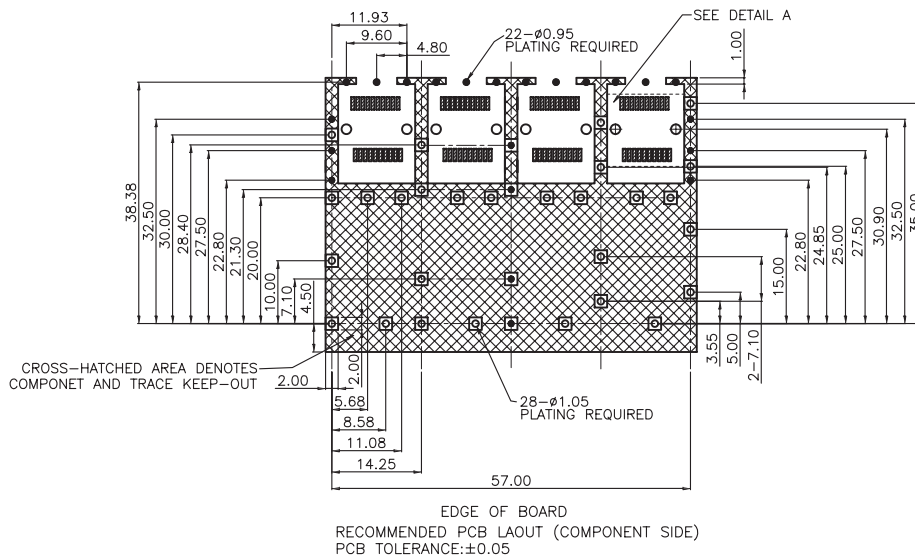
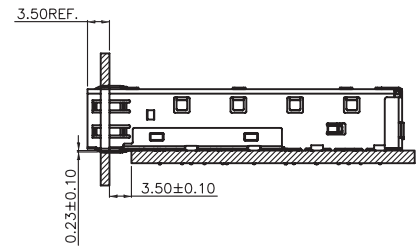
REV.  
 A

SHEET 1 OF 2



BEZEL

BEZEL OPENING  
BELOW TOP OF PCB



DETAIL A(SCALE 2:1)



Drafted by: XiaoMing

Dimensions:mm

Unless otherwise specified, all tolerances are  $\pm 0.25$

SFP Cage 1x4 port

Approved By: TSLEE

Part No:SFP014PF

REV.  
A

SHEET 2 OF 2