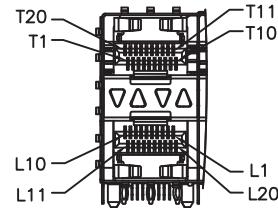
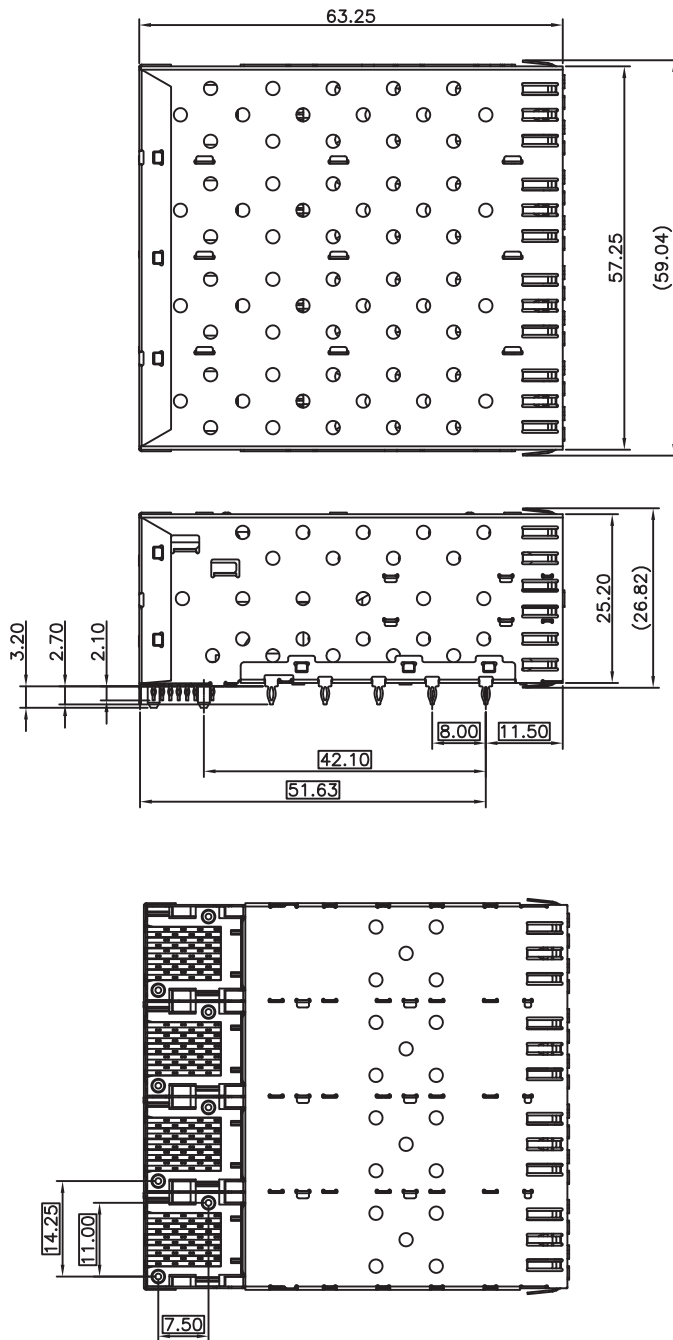
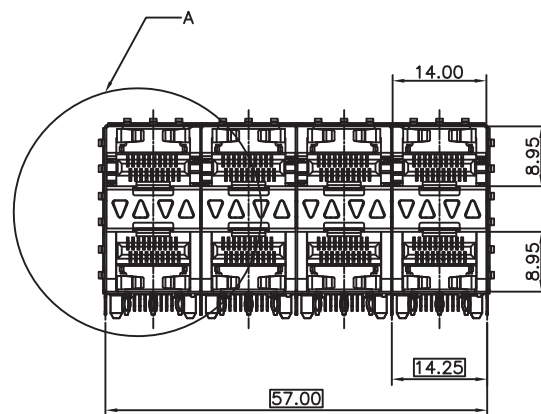


# SCHEMATICS



DETAIL A  
1:1



## NOTES:

### MATERIAL:

CAGE: NICKEL SILVER, THICKNESS 0.25mm

LIGHT PIPE: POLYCARBONATE, COLOR: CLEAR.

### CONNECTOR:

PLASTIC HOUSING: HIGH TEMPERATURE LCP, UL94 V-0.

SPRING: STAINLESS STEEL, THICKNESS 0.20mm

CONTACTS: PHOSPHOR BRONZE, THICKNESS 0.20mm

PLATING: 30μ" MIN. GOLD ON MATING AREA,  
150μ" MIN. MATE TIN ON SOLDER TAILS.

PACKAGING: TRAY PACKAGING.

TEMPERATURE RANGE: -40°C TO +85°C



Drafted by: XiaoMing

Dimensions: mm

Unless otherwise specified, all tolerances are  $\pm 0.25$

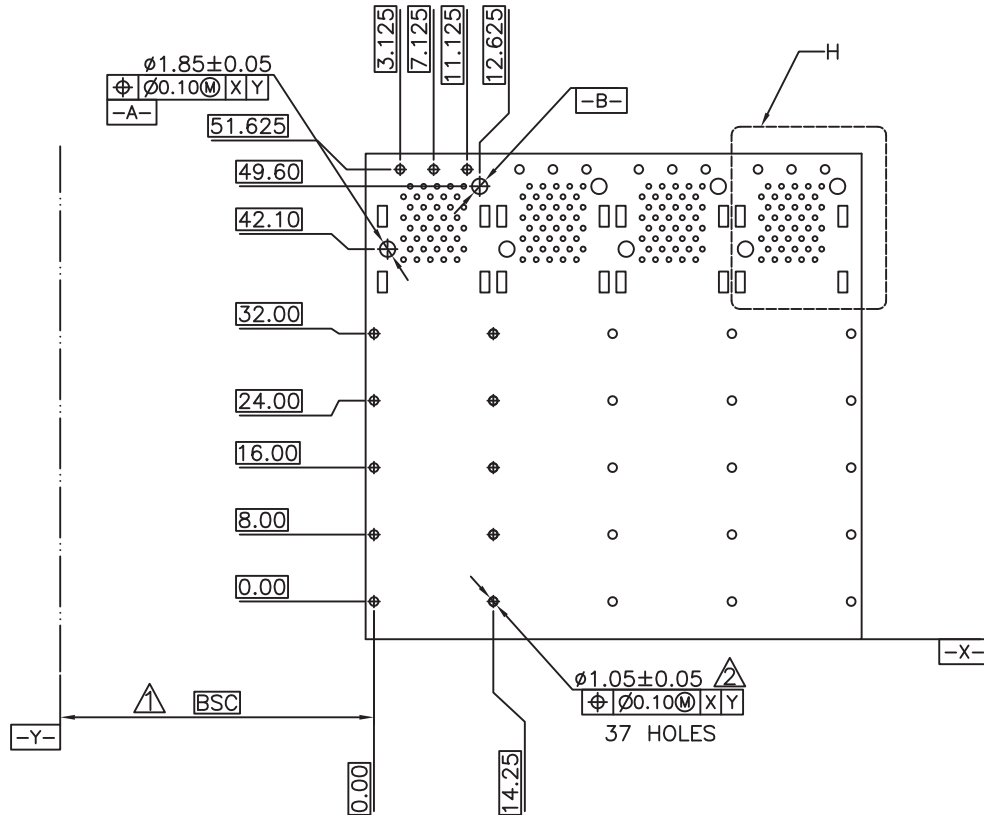
SFP Cage 2x4 port with full light pipes

Approved By: TSLEE

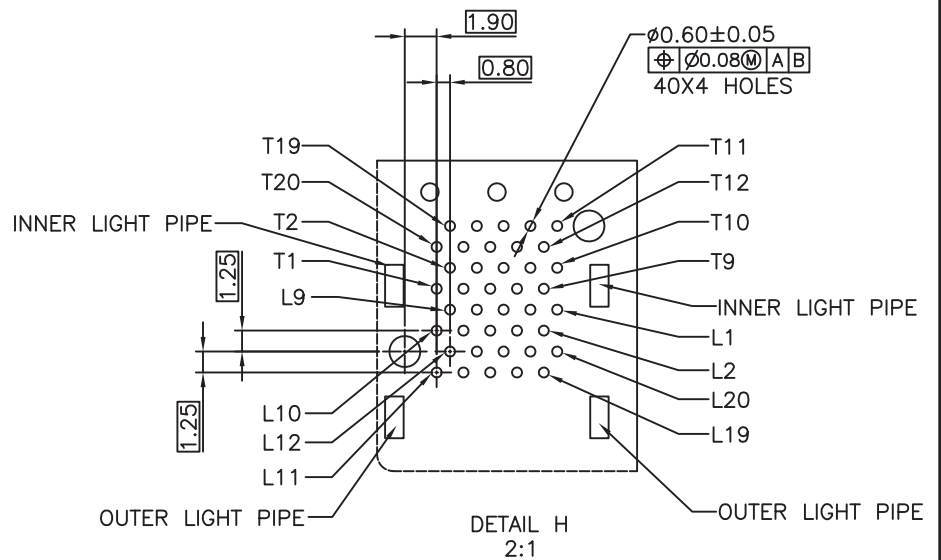
Part No: SFP024PB30

REV.  
A

SHEET 1 OF 3



ECOMMENDED PCB CONFIGURATION



NOTES:

1. DATUM AND BASIC DIMENSIONS ESTABLISHED BY CUSTOMER.
2. 1.05 mm DIAMETER HOLES ARE CHASSIS GROUND.



Drafted by:XiaoMing

Dimensions:mm

Unless otherwise specified, all tolerances are  $\pm 0.25$

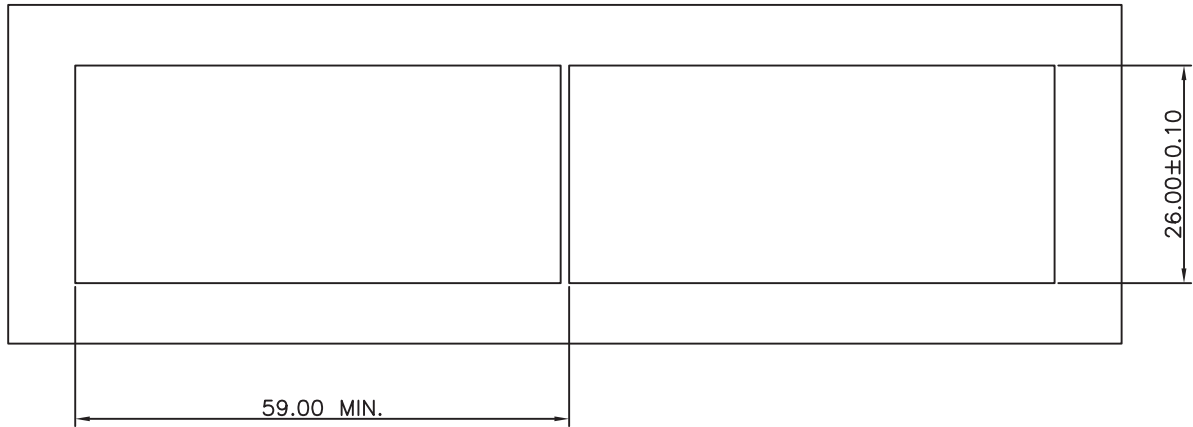
SFP Cage 2x4 port with full light pipes

Approved By: TSLEE

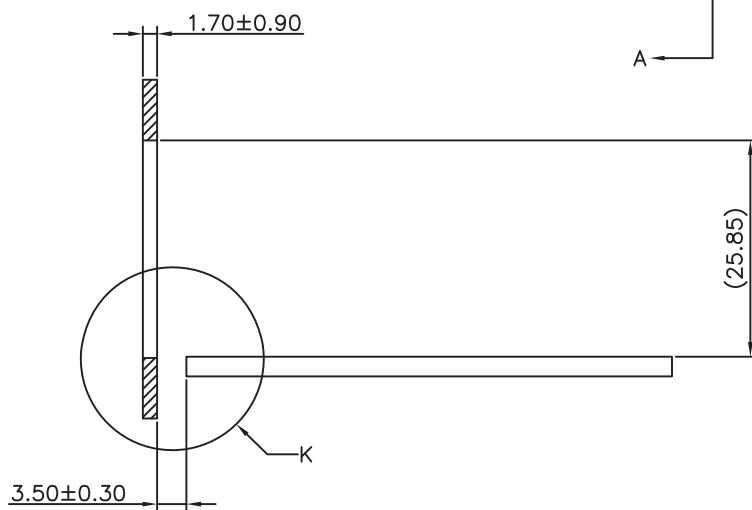
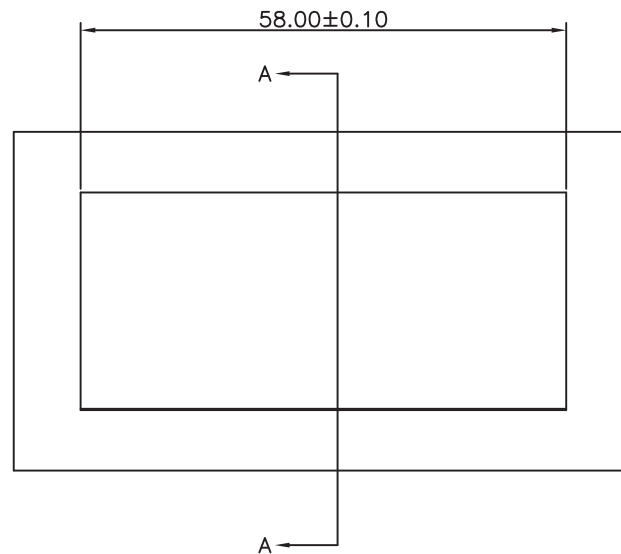
Part No: SFP024PB30

REV.  
A

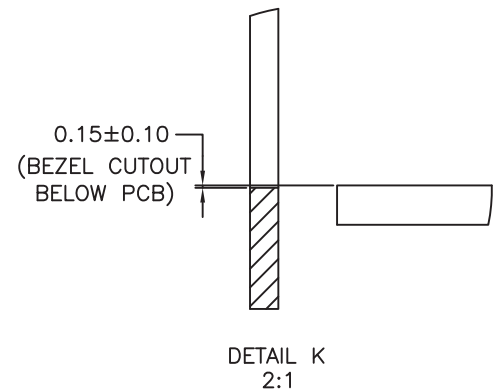
SHEET 2 OF 3



RECOMMENDED BEZEL DESIGN



SECTION A-A



Drafted by: XiaoMing

Dimensions: mm

Unless otherwise specified, all tolerances are  $\pm 0,25$

SFP Cage 2x4 port with full light pipes

Approved By: TSLEE

Part No: SFP024PB30

REV.  
A

SHEET 3 OF 3