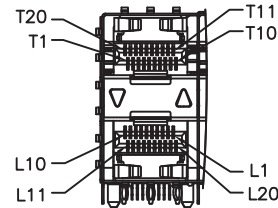
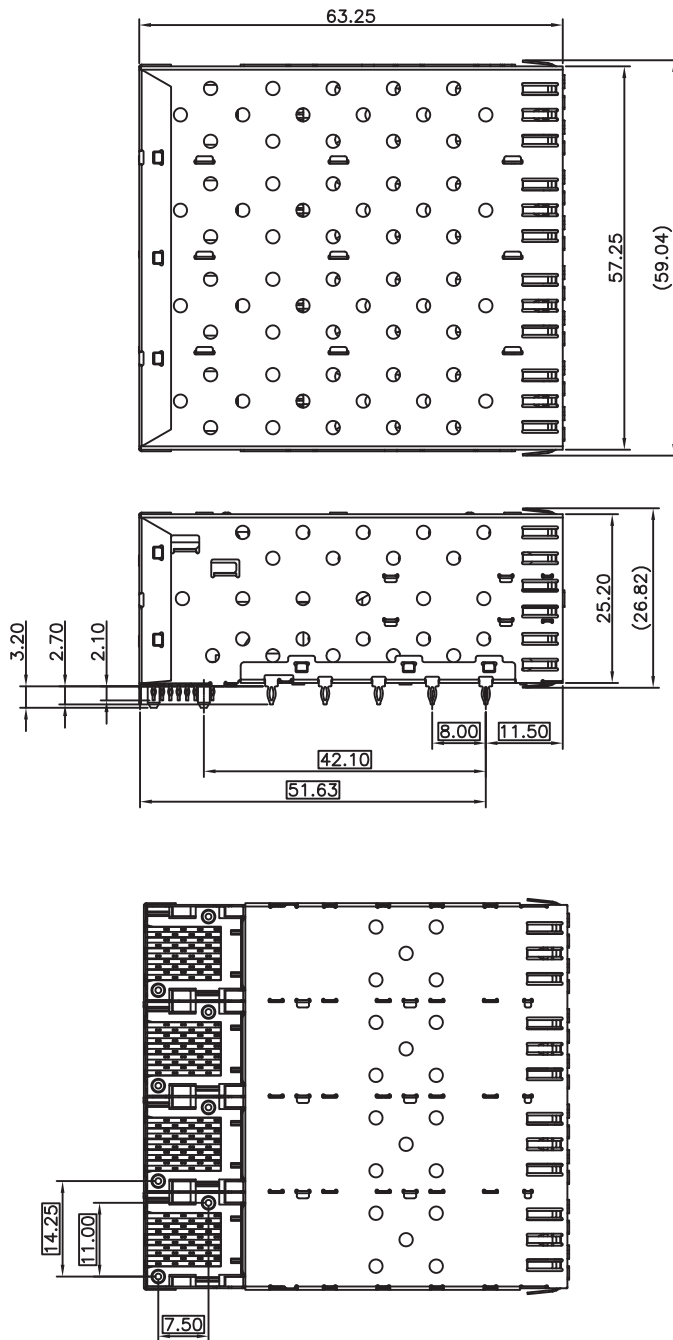
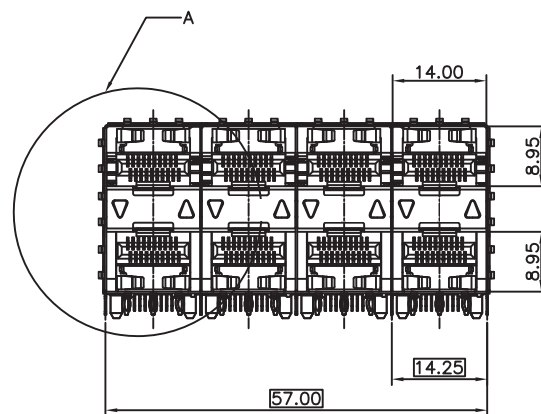


SCHEMATICS



DETAIL A
1:1



NOTES:

MATERIAL:

CAGE: NICKEL SILVER, THICKNESS 0.25mm

LIGHT PIPE: POLYCARBONATE, COLOR: CLEAR.

CONNECTOR:

PLASTIC HOUSING: HIGH TEMPERATURE LCP, UL94 V-0.

SPRING: STAINLESS STEEL, THICKNESS 0.20mm

CONTACTS: PHOSPHOR BRONZE, THICKNESS 0.20mm

PLATING: 15μ" MIN. GOLD ON MATING AREA,
150μ" MIN. MATE TIN ON SOLDER TAILS.

PACKAGING: TRAY PACKAGING.

TEMPERATURE RANGE: -40°C TO +85°C



Drafted by: XiaoMing

Dimensions:mm

Unless otherwise specified, all tolerances are ± 0.25

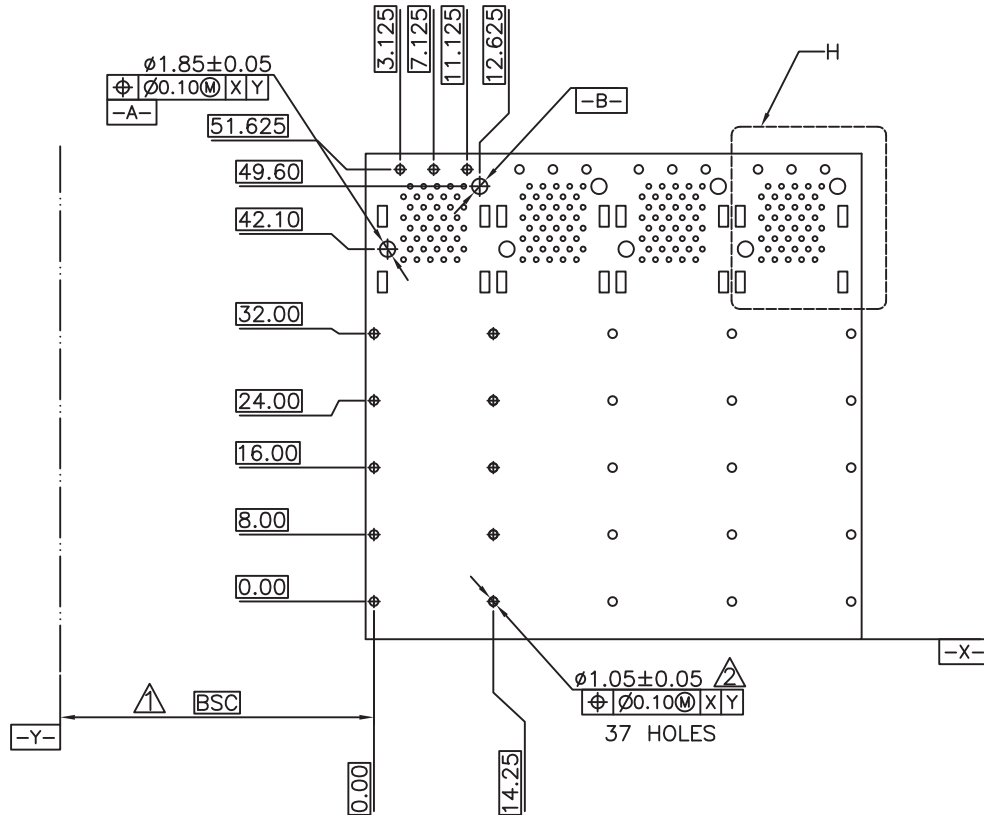
SFP Cage 2x4 port with outer light pipes

Approved By: TSLEE

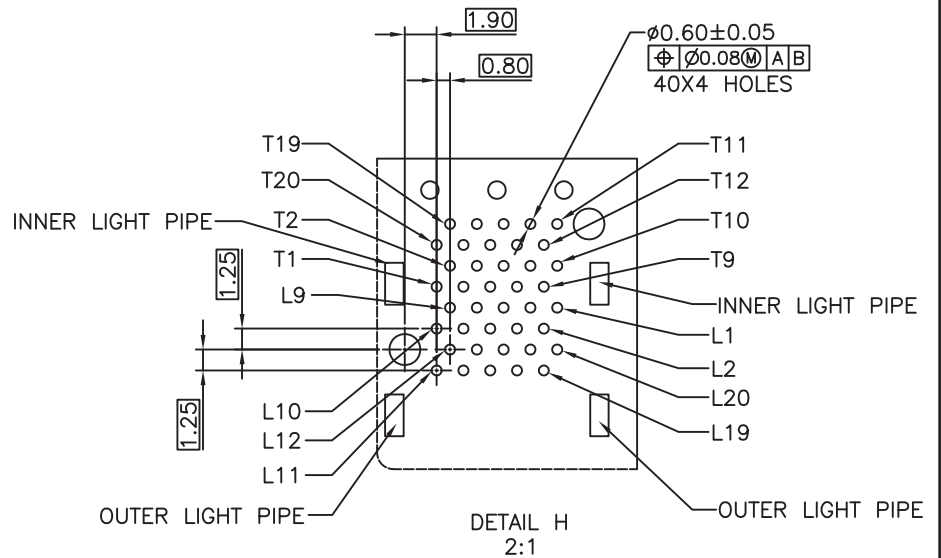
Part No: SFP024PC15

REV.
A

SHEET 1 OF 3



ECOMMENDED PCB CONFIGURATION



NOTES:

1. DATUM AND BASIC DIMENSIONS ESTABLISHED BY CUSTOMER.
2. 1.05 mm DIAMETER HOLES ARE CHASSIS GROUND.



Drafted by: XiaoMing

Dimensions:mm

Unless otherwise specified, all tolerances are $\pm 0,25$

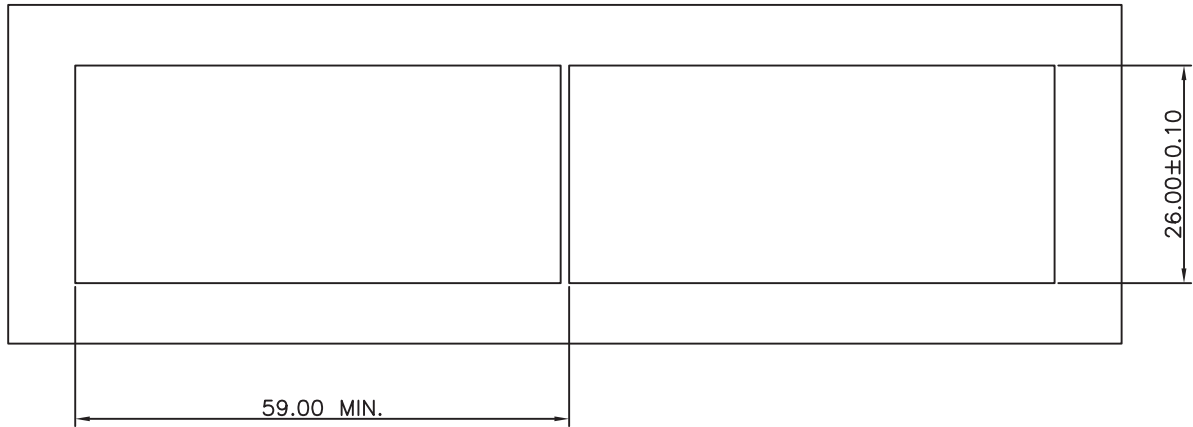
SFP Cage 2x4 port with outer light pipes

Approved By: TSLEE

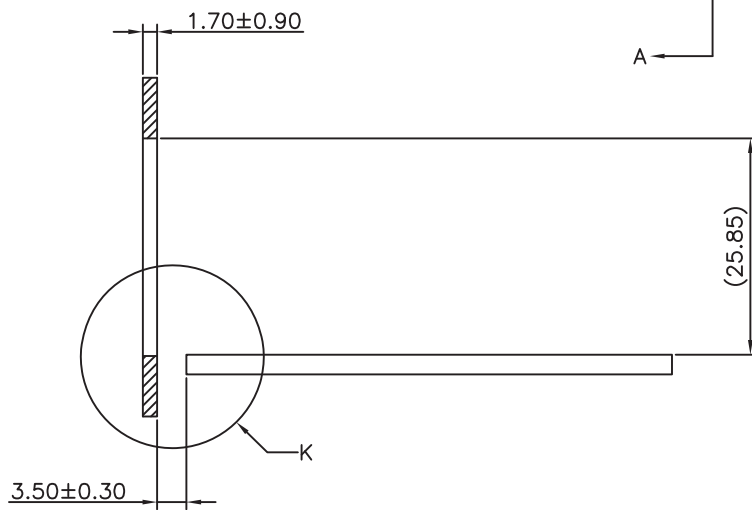
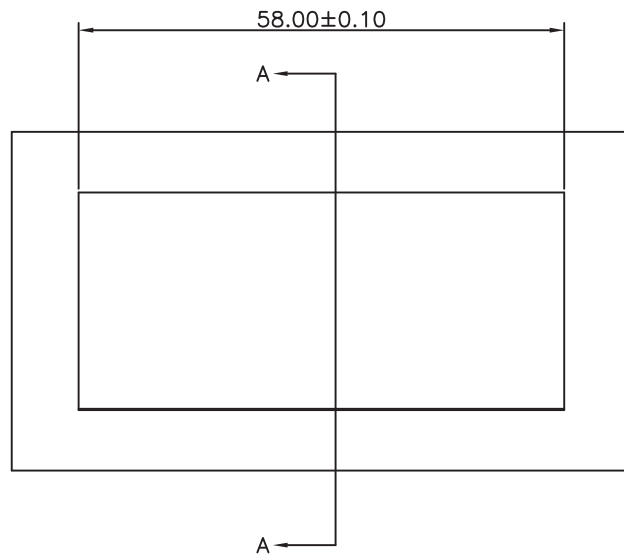
Part No: SFP024PC15

REV.
A

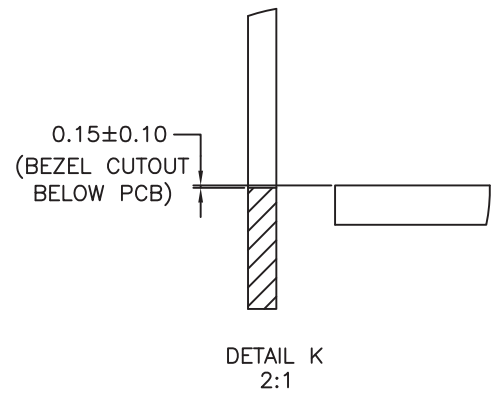
SHEET 2 OF 3



RECOMMENDED BEZEL DESIGN



SECTION A-A



Drafted by: XiaoMing

Dimensions: mm

Unless otherwise specified, all tolerances are $\pm 0,25$

SFP Cage 2x4 port with outer light pipes

Approved By: TSLEE

Part No: SFP024PC15

REV.
A

SHEET 3 OF 3