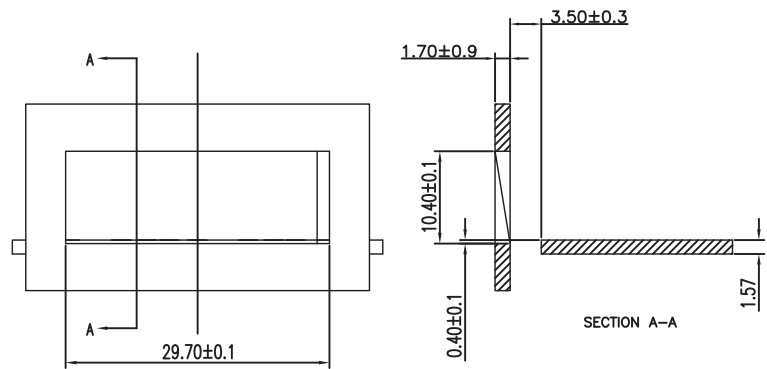
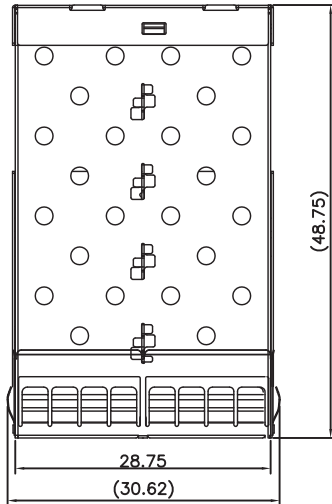
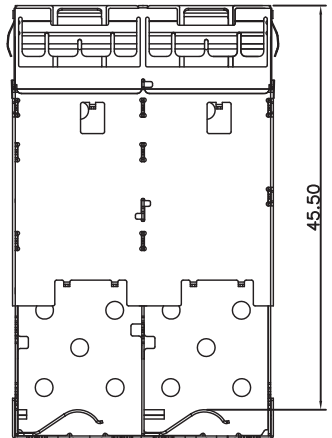
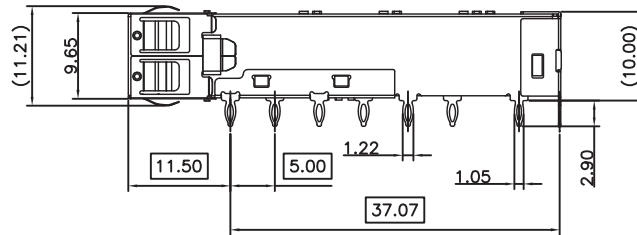
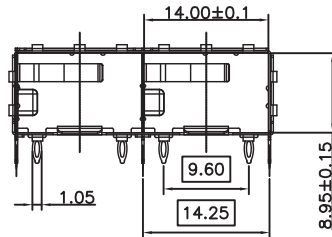


SCHEMATICS



RECOMMENDED BEZEL DESIGN



NOTES:

- 1.MATERIAL: NICKEL SILVER, THICKNESS 0.25mm
- 2.PACKAGING: TRAY PACKAGING
- 3.TEMPERATURE RANGE: -55°C TO +85°C



Drafted by:ZhangXuan

Dimensions:mm

Unless otherwise specified, all tolerances are ± 0.25

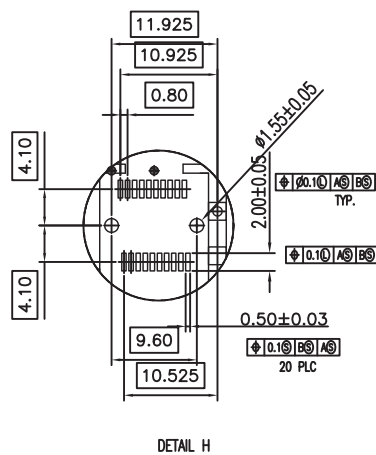
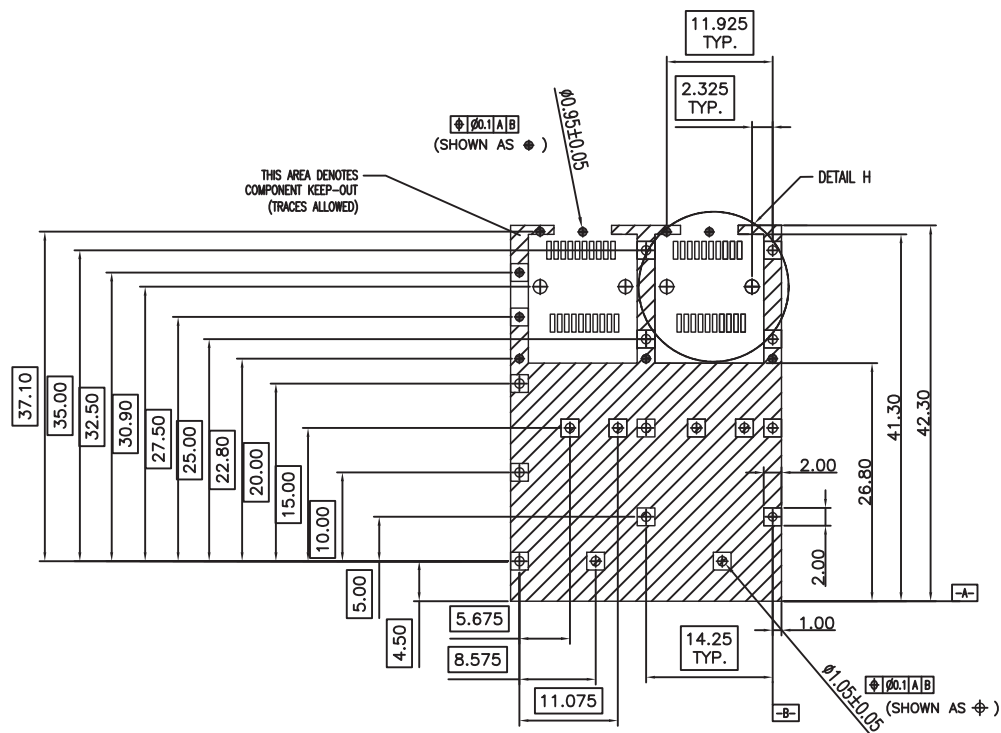
SFP+Cage 1x2

Approved By: TSLEE

Part No:SFPP012PA

REV.
A

SHEET 1 OF 2



Drafted by:ZhangXuan

Dimensions:mm

Unless otherwise specified, all tolerances are $\pm 0,25$

SFP+Cage 2x1

Approved By: TSLEE

Part No:SFPP012PA

REV.
A

SHEET 2 OF 2