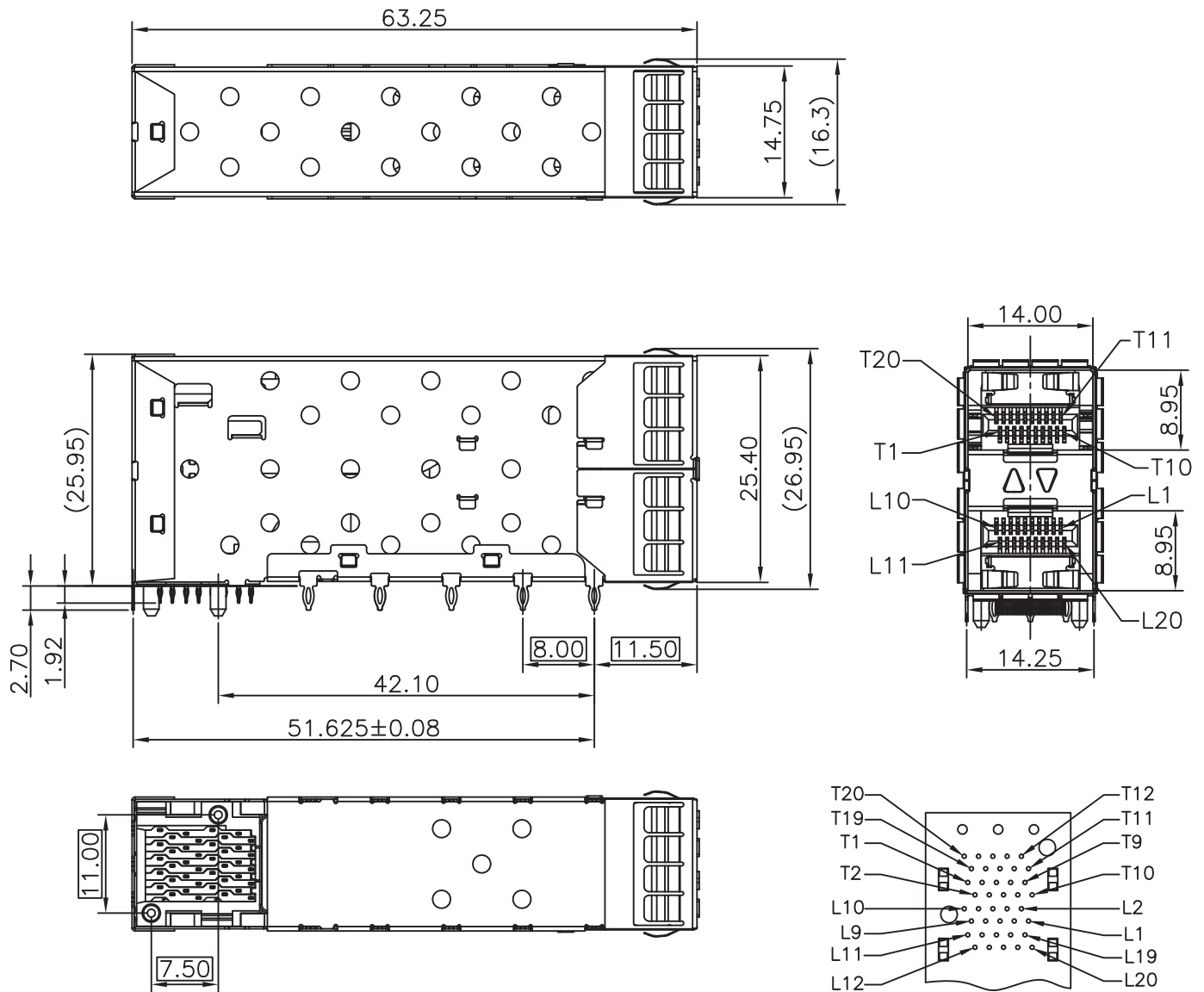


SCHEMATICS



NOTES:
 MATERIAL:
 CAGE: COPPER ALLOY
 CONNECTOR:
 PLASTIC HOUSING: HIGH TEMPERATURE LCP, UL94 V-0.
 LIGHT PIPE: POLYCARBONATE; COLOR: CLEAR
 SPRING: STAINLESS STEEL
 CONTACTS: PHOSPHOR BRONZE
 CONTACT PLATING: 15u" MIN. GOLD ON MATING AREA,
 150u" MATTE TIN ON SOLDER TAILS
 PACKAGING: TRAY PACKAGING.
 TEMPERATURE RANGE: -40°C TO +85°C

CONNECTOR PIN-OUT
 COMPONENT SIDE OF BOARD



Drafted by:ZhangXuan

Dimensions:mm
 Unless otherwise specified, all tolerances are ± 0.25

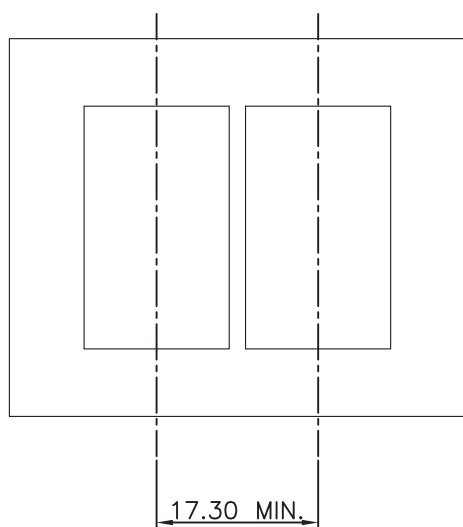
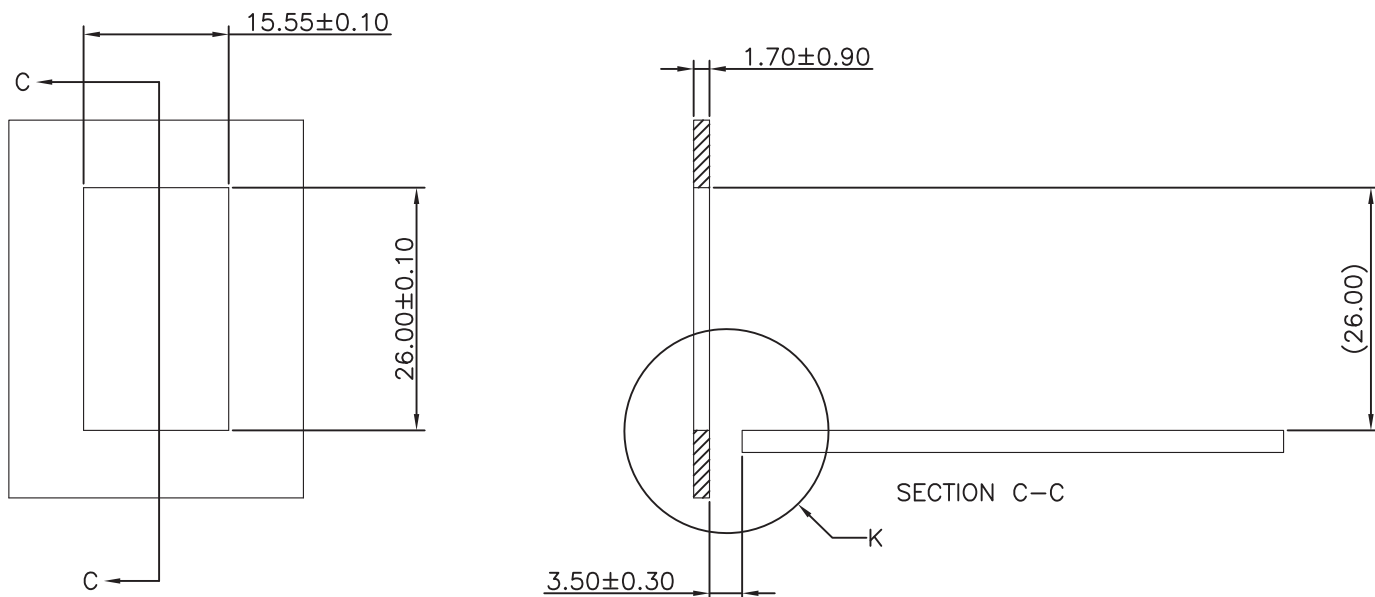
SFP+ Cage 2x1 + Connector

Approved By: TSLEE

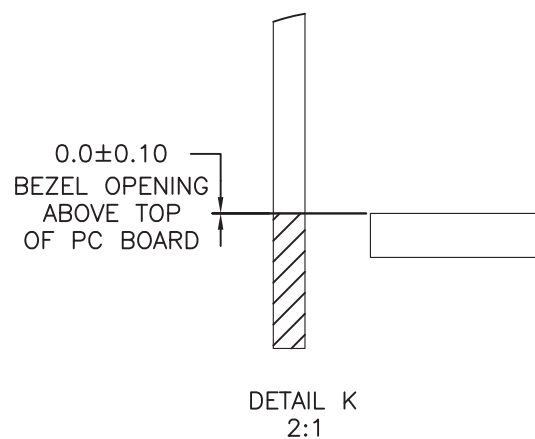
Part No: SFPP021PD15

REV.
 A

SHEET 1 OF 4



RECOMMENDED BEZEL DESIGN



Drafted by:ZhangXuan

Dimensions:mm

Unless otherwise specified, all tolerances are $\pm 0,25$

SFP+ Cage 2x1 + Connector

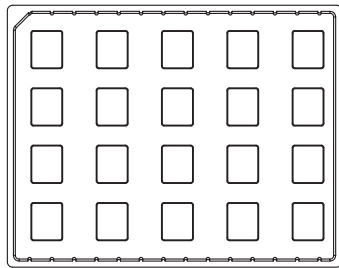
Approved By: TSLEE

Part No: SFPP021PD15

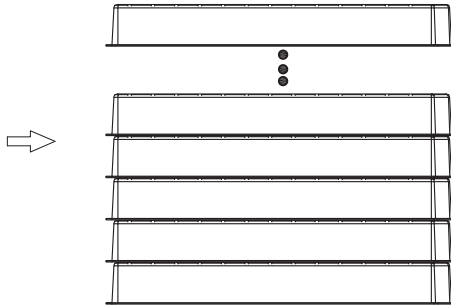
REV.
A

SHEET 3 OF 4

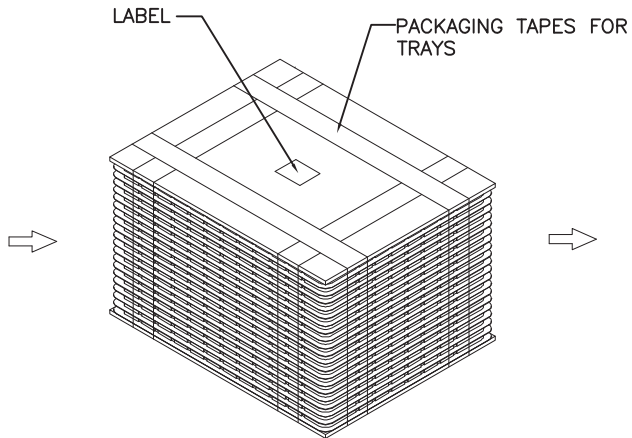
PACKAGE INFORMATION AND LABEL



1. PRODUCTS IN TRAYS

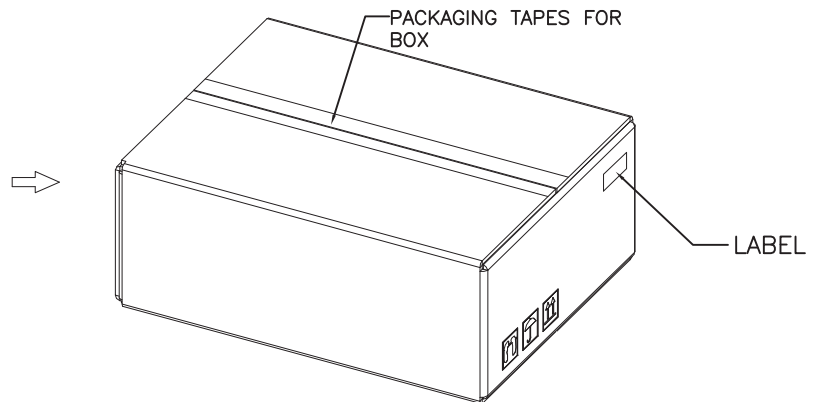


2. TRAYS OVERLAY:
(THE NEXT TRAY NEED ROTATE 180 DEGREE
AND
PUT IT ON PREVIOUS TRAY.)
(相邻两个吸塑间水平方向成180度摆放)



3. LABEL & PACKAGING TAPES FOR TRAYS:

| PACKAGING LISTS | |
|-----------------------|-------------|
| ITEM | Q'TY |
| PRODUCT | 120 PCS |
| TRAY | 6 PCS |
| BOX(L340*W265*H200MM) | 1 PCS |
| LABLE | 2 PCS |
| PACKAGING TAPES | 8 M (ABOUT) |



4. LABEL & PACKAGING TAPES FOR BOX



Drafted by:ZhangXuan

Dimensions:mm

Unless otherwise specified, all tolerances are $\pm 0,25$

SFP+ Cage 2x1 + Connector

Approved By: TSLEE

Part No: SFPP021PD15

REV.
A

SHEET 4 OF 4