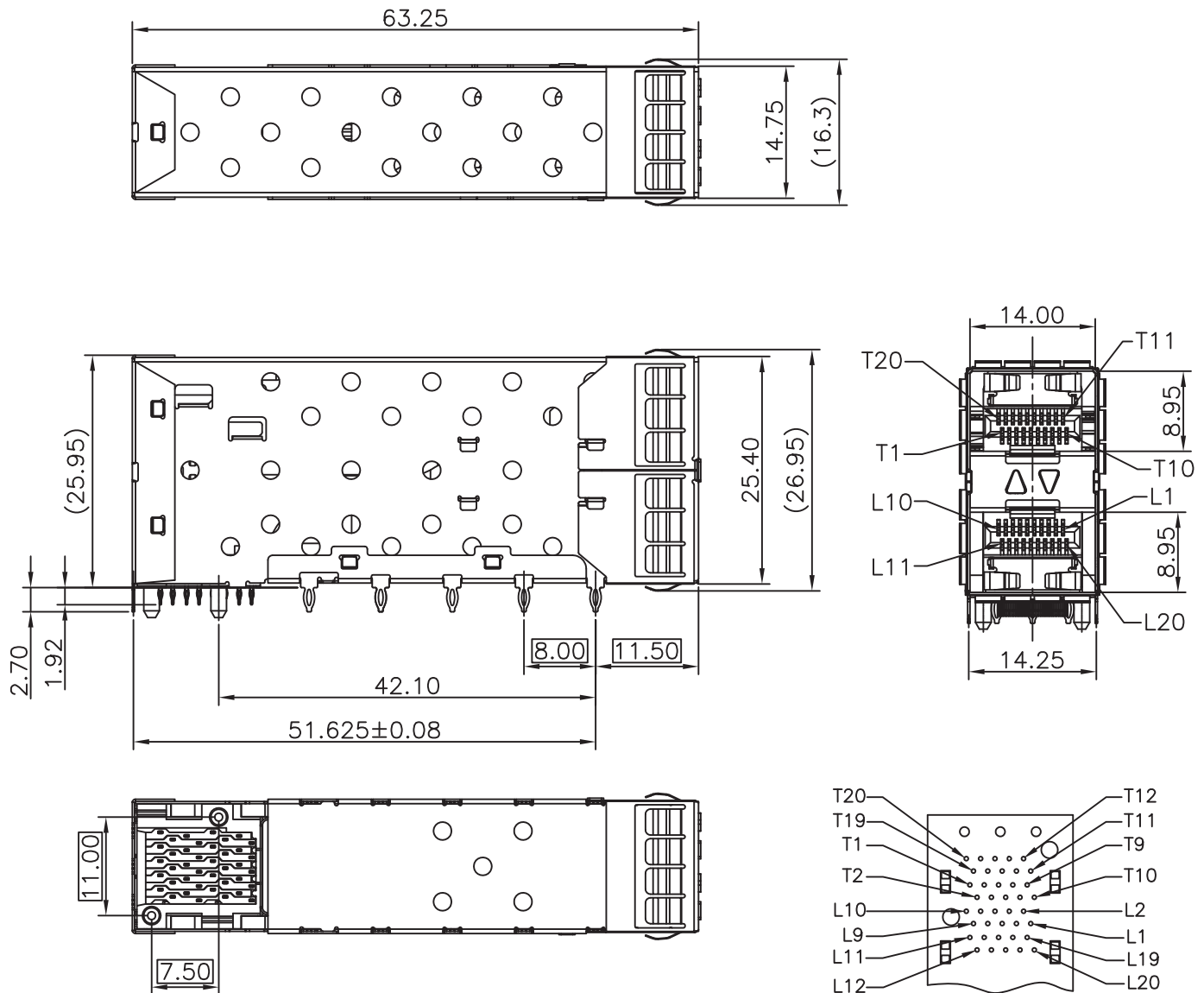


SCHEMATICS



NOTES:
 MATERIAL:
 CAGE: COPPER ALLOY
 CONNECTOR:
 PLASTIC HOUSING: HIGH TEMPERATURE LCP, UL94 V-0.
 LIGHT PIPE: POLYCARBONATE; COLOR: CLEAR
 SPRING: STAINLESS STEEL
 CONTACTS: PHOSPHOR BRONZE
 CONTACT PLATING: 30u" MIN. GOLD ON MATING AREA,
 150u" MATTE TIN ON SOLDER TAILS
 PACKAGING: TRAY PACKAGING.
 TEMPERATURE RANGE: -40°C TO +85°C

CONNECTOR PIN-OUT
 COMPONENT SIDE OF BOARD



Drafted by: ZhangXuan

Dimensions: mm

Unless otherwise specified, all tolerances are ± 0.25

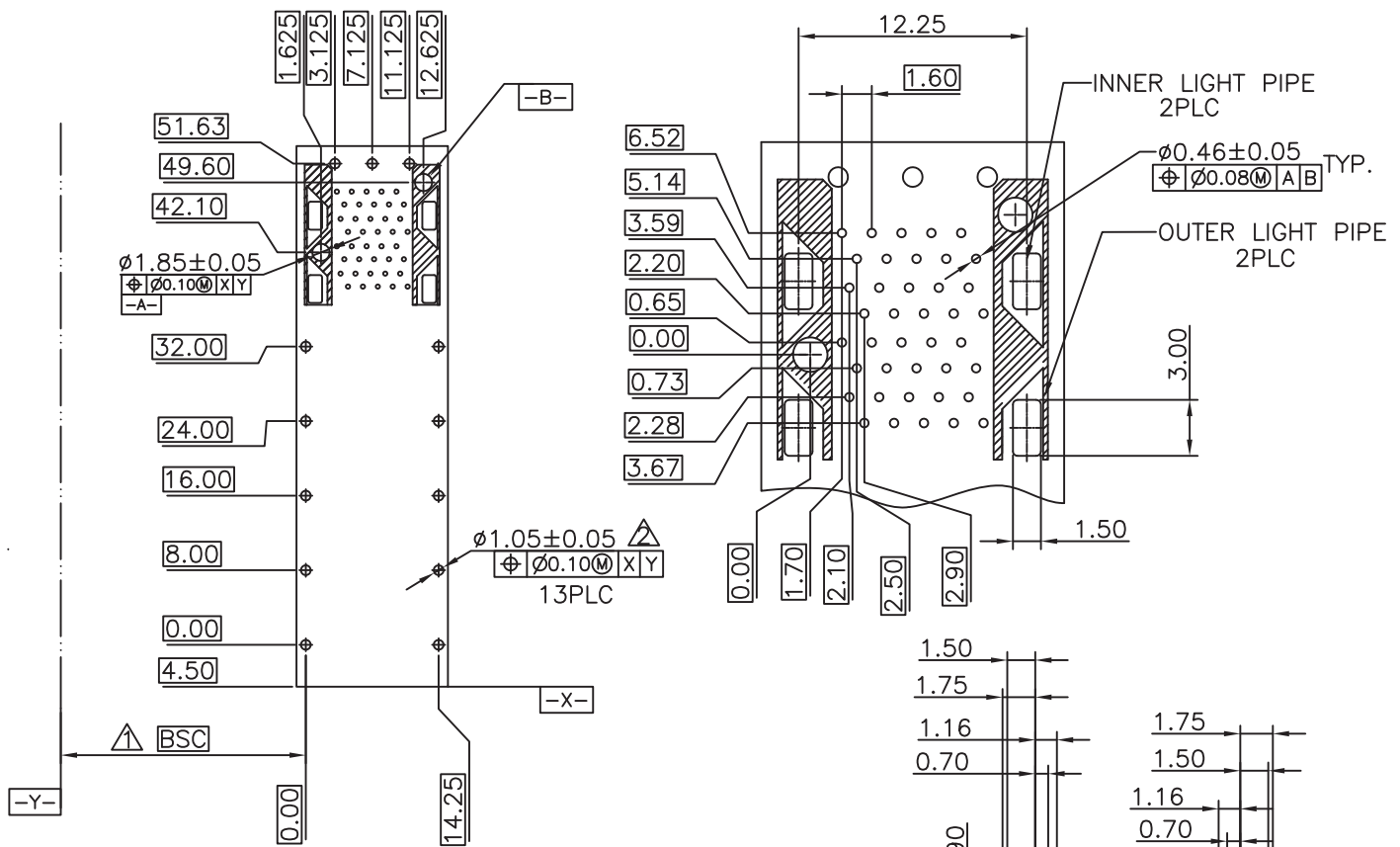
SFP+Cage 2x1 + Connector

Approved By: TSLEE

Part No: SFPP021PD30

REV.
A

SHEET 1 OF 4



RECOMMENDED PCB CONFIGURATION

THE HATCHED AREA IN THIS VIEW INDICATES ZONES THAT ARE OCCUPIED BY THE PLASTIC HOUSING THAT SEATS AGAINST THE PCB AND BY THE VERTICAL METAL CAGE WALL THAT STOPS JUST SHORT OF THE PCB

NOTES:

1. DATUM AND BASIC DIMENSIONS ESTABLISHED BY CUSTOMER.
2. 1.05 mm DIAMETER HOLES ARE CHASSIS GROUND .



Drafted by: ZhangXuan

Dimensions: mm

Unless otherwise specified, all tolerances are ± 0.25

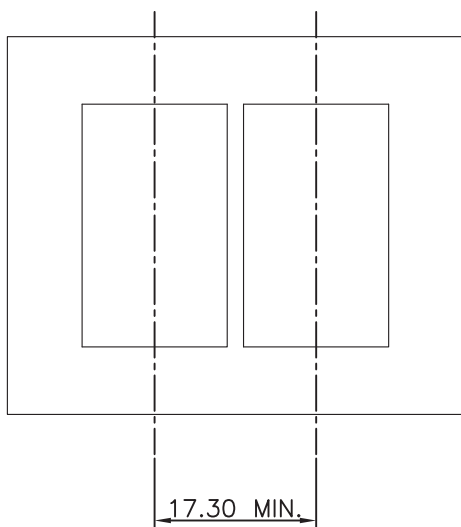
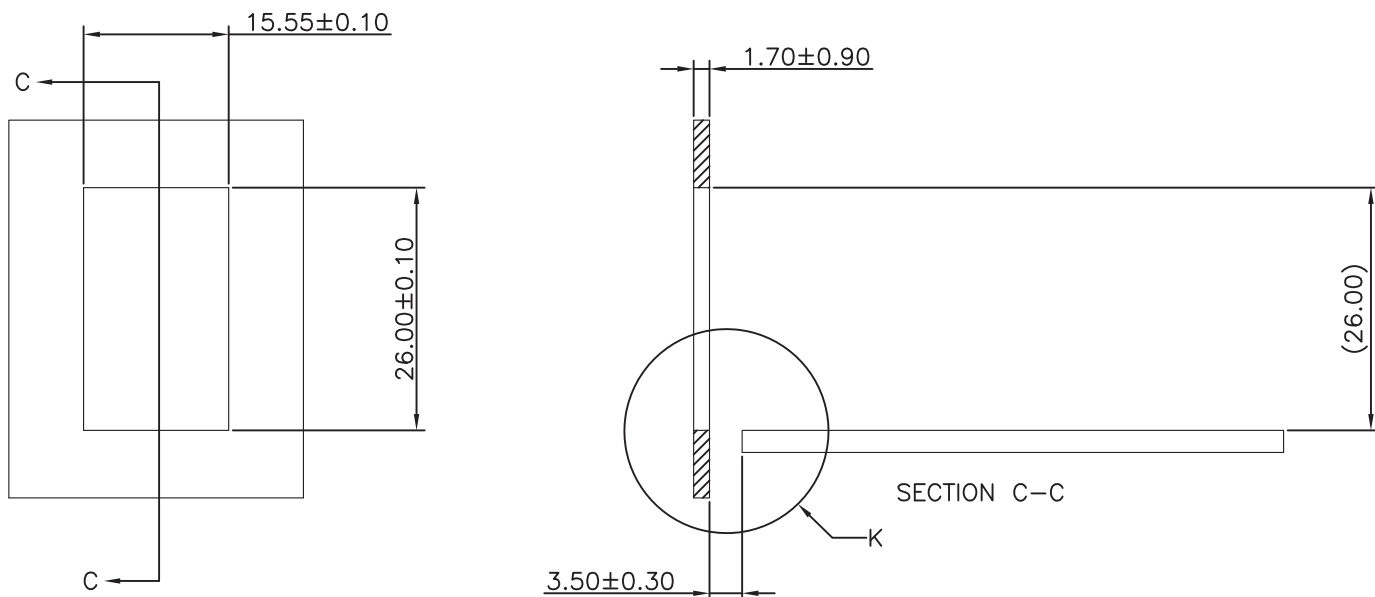
SFP+Cage 2x1 + Connector

Approved By: TSLEE

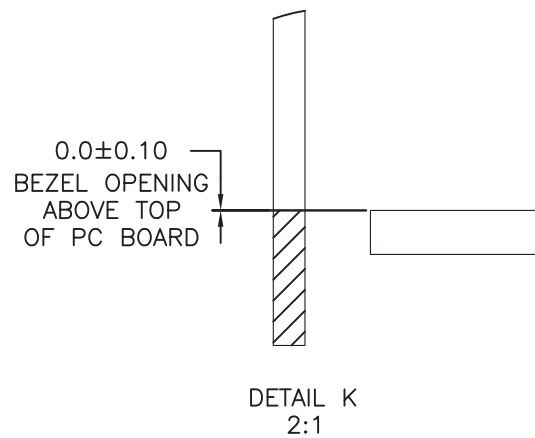
Part No: SFPP021PD30

REV.
A

SHEET 2 OF 4



RECOMMENDED BEZEL DESIGN



Drafted by: ZhangXuan

Dimensions: mm

Unless otherwise specified, all tolerances are ± 0.25

SFP+Cage 2x1 + Connector

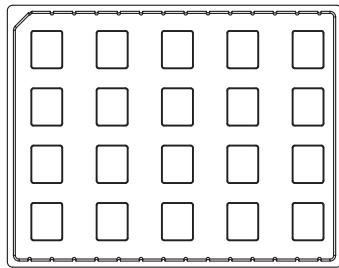
Approved By: TSLEE

Part No: SFPP021PD30

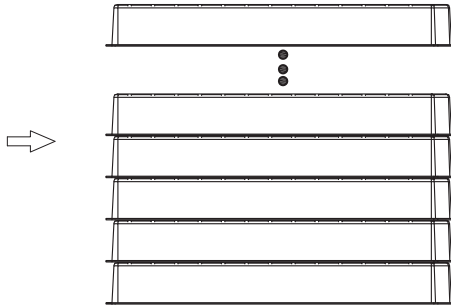
REV.
A

SHEET 3 OF 4

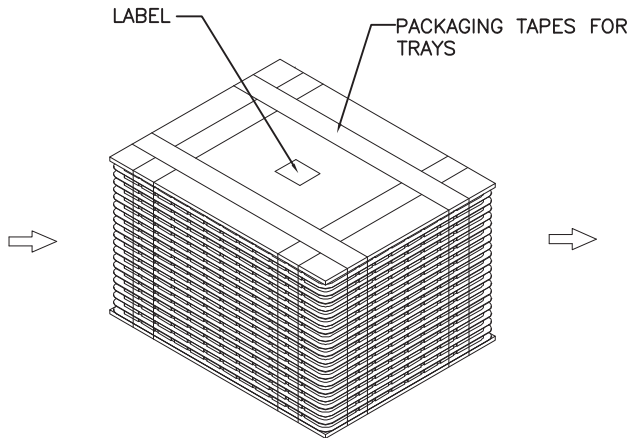
PACKAGE INFORMATION AND LABEL



1. PRODUCTS IN TRAYS

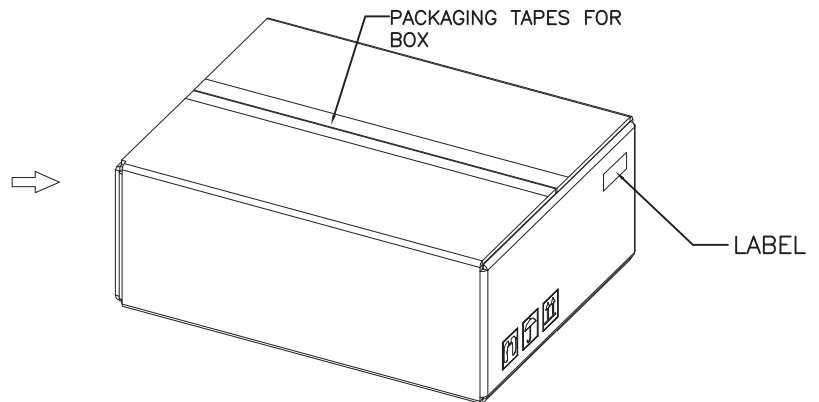


2. TRAYS OVERLAY:
(THE NEXT TRAY NEED ROTATE 180 DEGREE
AND
PUT IT ON PREVIOUS TRAY.)
(相邻两个吸塑间水平方向成180度摆放)



3. LABEL & PACKAGING TAPES FOR TRAYS:

PACKAGING LISTS	
ITEM	Q'TY
PRODUCT	120 PCS
TRAY	6 PCS
BOX(L340*W265*H200MM)	1 PCS
LABLE	2 PCS
PACKAGING TAPES	8 M (ABOUT)



4. LABEL & PACKAGING TAPES FOR BOX



Drafted by:ZhangXuan

Dimensions:mm

Unless otherwise specified, all tolerances are $\pm 0,25$

SFP+Cage 2x1 + Connector

Approved By: TSLEE

Part No: SFPP021PD30

REV.
A

SHEET 4 OF 4