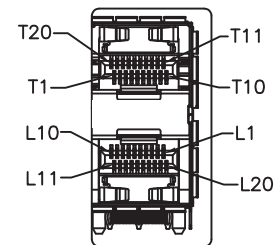
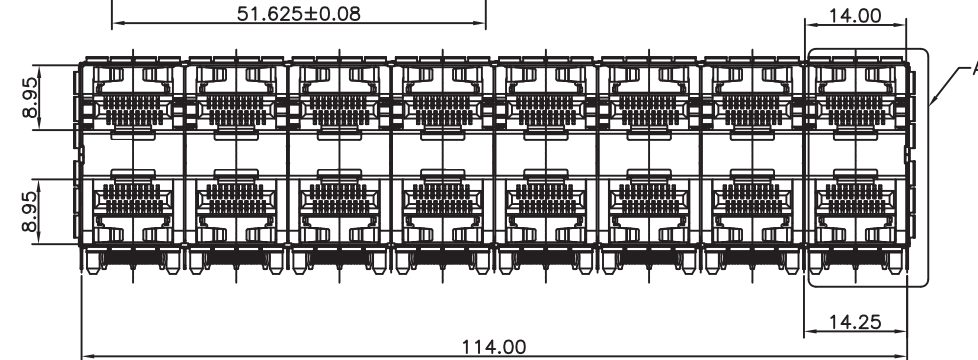
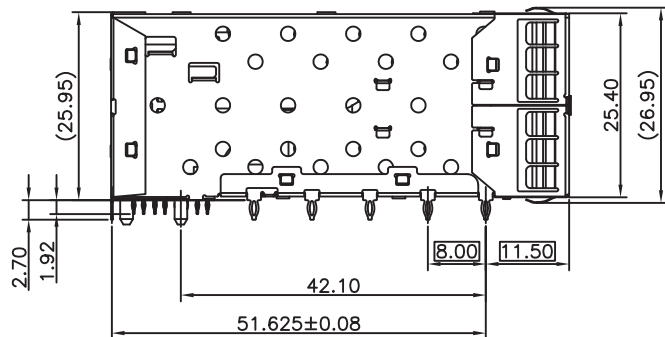
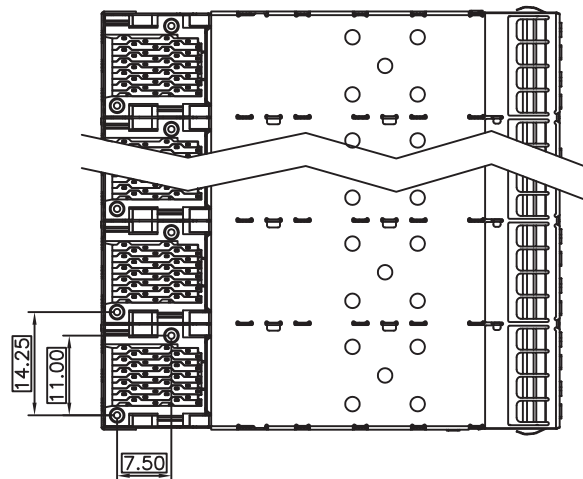
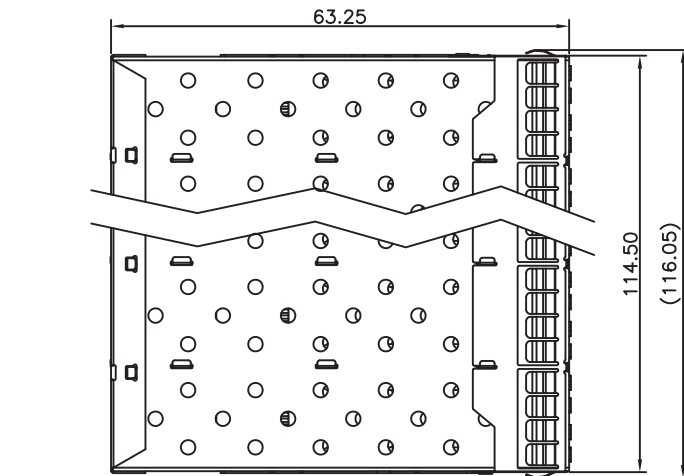
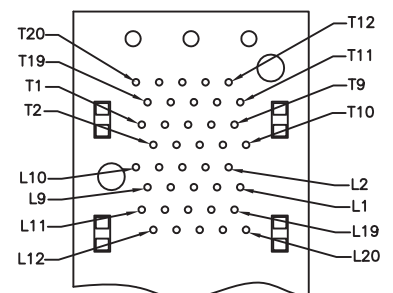


SCHEMATICS



DETAIL A
1:1



CONNECTOR PIN-OUT
COMPONENT SIDE OF BOARD

NOTES:
MATERIAL:
CAGE: NICKEL SILVER
CONNECTOR:
PLASTIC HOUSING: HIGH TEMPERATURE LCP, UL94 V-0.
LIGHT PIPE: POLYCARBONATE; COLOR: CLEAR
SPRING: STAINLESS STEEL
CONTACTS: PHOSPHOR BRONZE
CONTACT PLATING: 30u" MIN. GOLD ON MATING AREA,
150u" MATTE TIN ON SOLDER TAILS
PACKAGING: TRAY PACKAGING.
TEMPERATURE RANGE: -40°C TO +85°C



Drafted by: XiaoMing

Dimensions: mm
Unless otherwise specified, all tolerances are ± 0.25

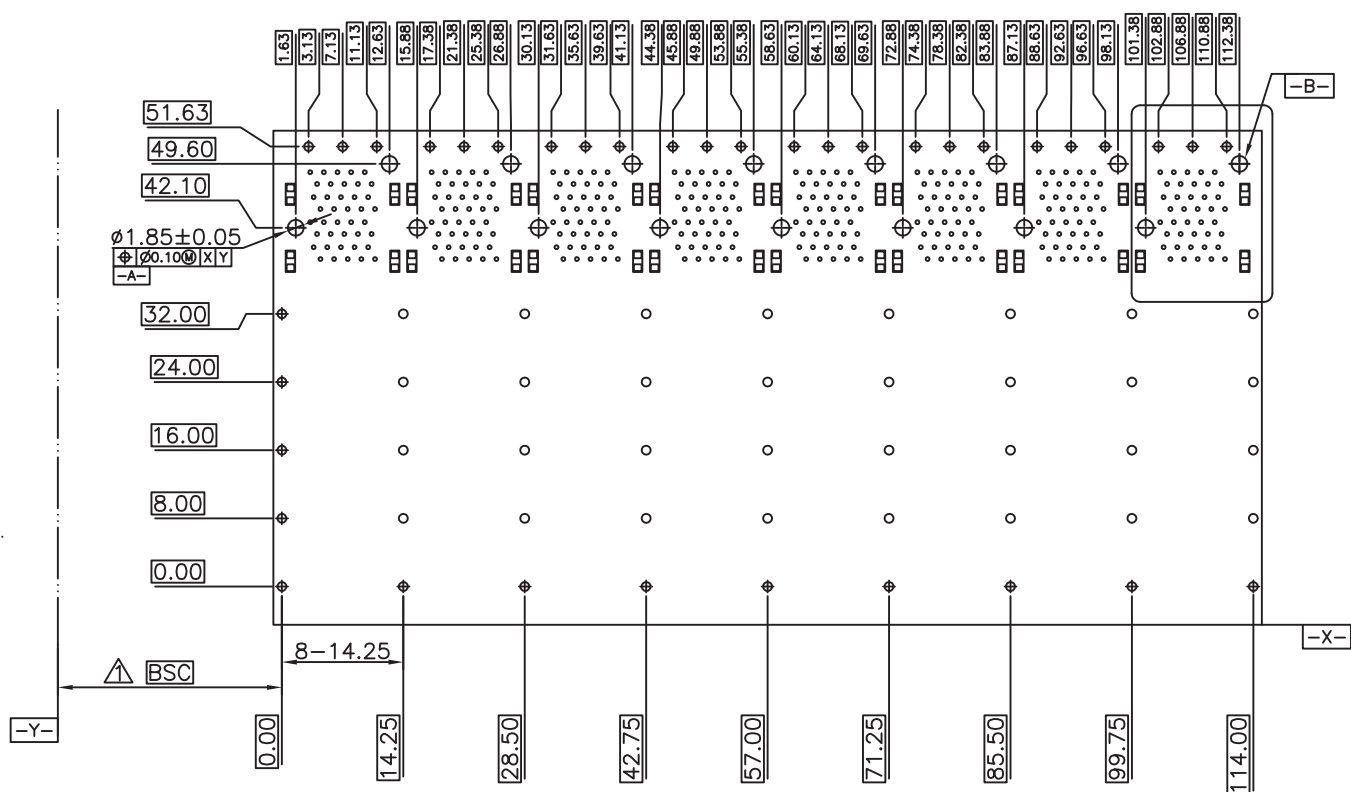
SFP+ Cage 2x8 port without light pipes

Approved By: TSLEE

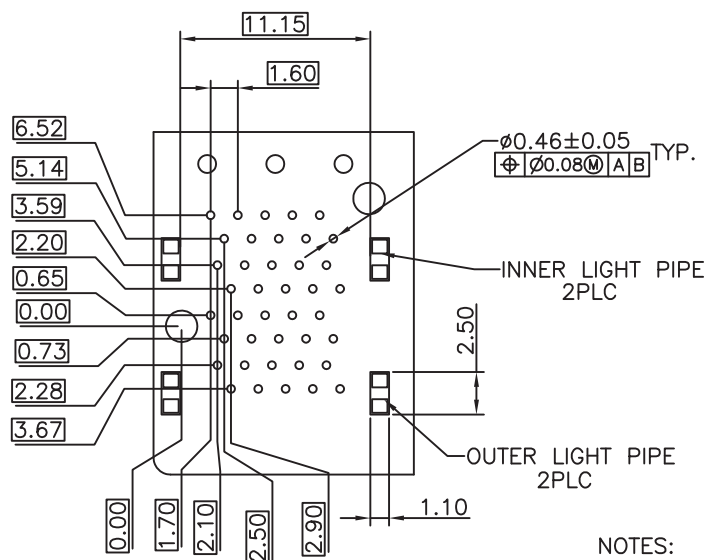
Part No: SFPP028PA30

REV.
A

SHEET 1 OF 3



ECOMMENDED PCB CONFIGURATION



NOTES:

1. DATUM AND BASIC DIMENSIONS ESTABLISHED BY CUSTOMER.
2. 1.05 mm DIAMETER HOLES ARE CHASSIS GROUND (18 HOLES).



Drafted by: XiaoMing

Dimensions:mm

Unless otherwise specified, all tolerances are $\pm 0,25$

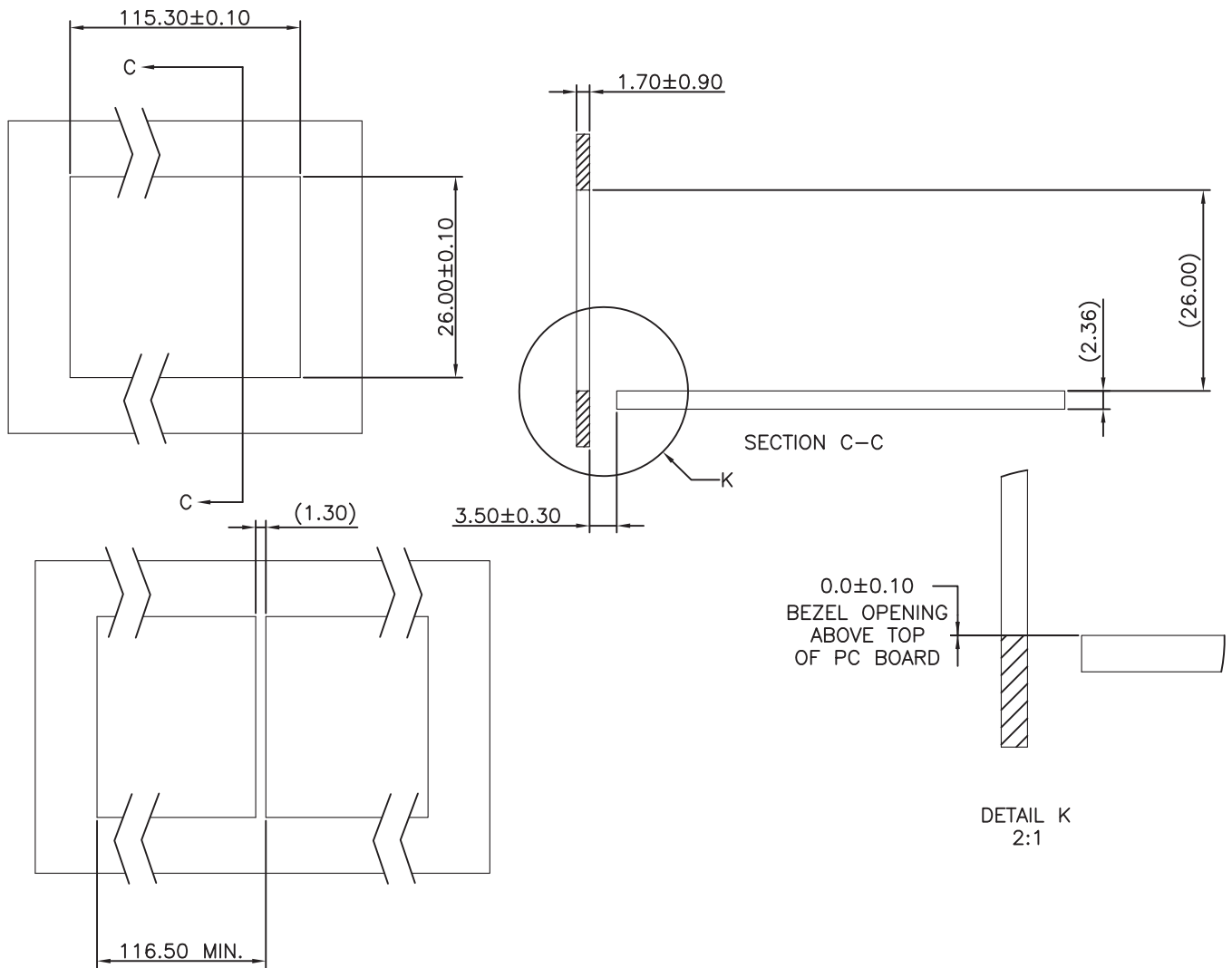
SFP+ Cage 2x8 port without light pipes

Approved By: TSLEE

Part No: SFPP028PA30

REV.
A

SHEET 2 OF 3



RECOMMENDED BEZEL DESIGN



Drafted by: XiaoMing

Dimensions: mm

Unless otherwise specified, all tolerances are ± 0.25

SFP+ Cage 2x8 port without light pipes

Approved By: TSLEE

Part No: SFPP028PA30

REV.
A

SHEET 3 OF 3