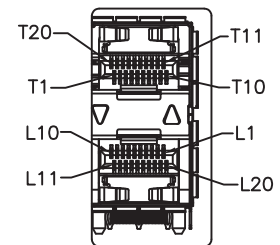
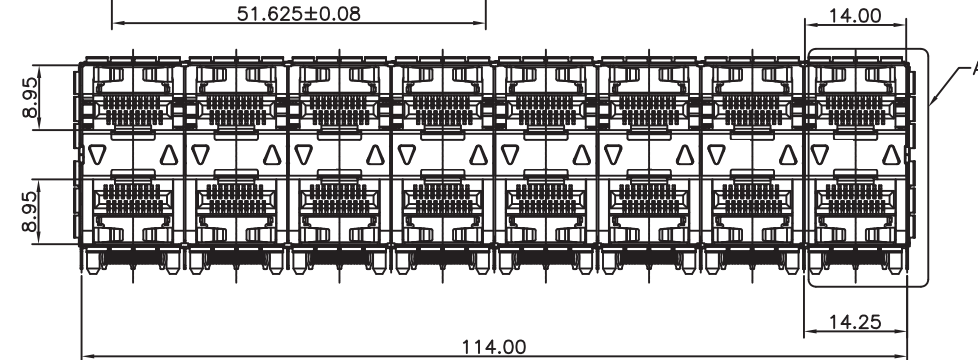
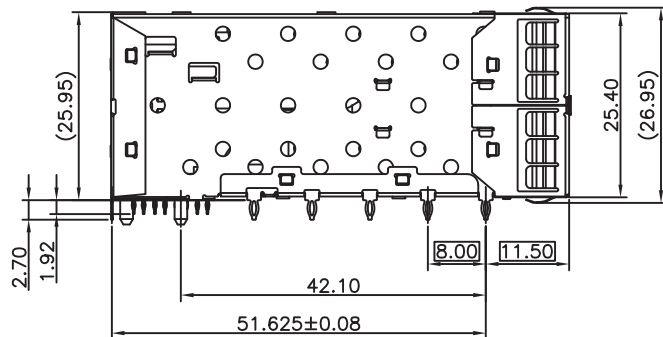
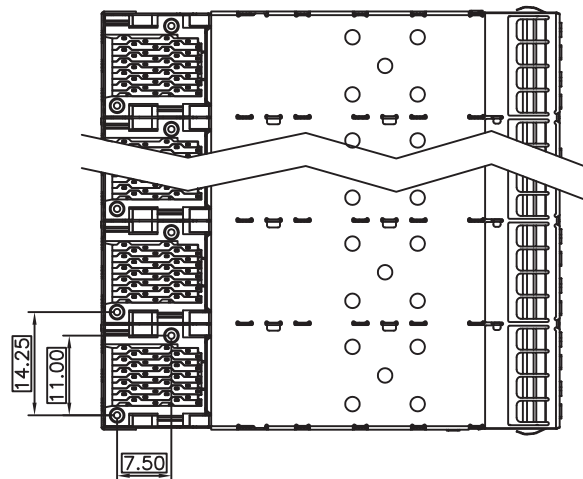
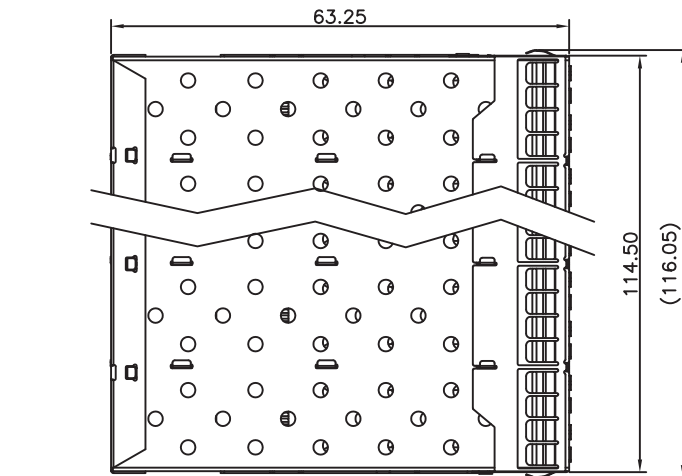
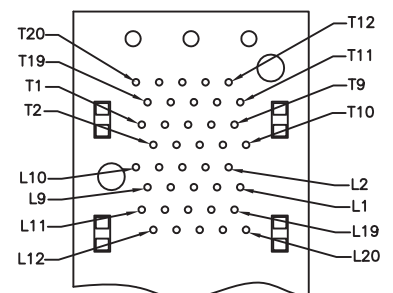


# SCHEMATICS



DETAIL A  
1:1



CONNECTOR PIN-OUT  
COMPONENT SIDE OF BOARD

NOTES:  
MATERIAL:  
CAGE: NICKEL SILVER  
CONNECTOR:  
PLASTIC HOUSING: HIGH TEMPERATURE LCP, UL94 V-0.  
LIGHT PIPE: POLYCARBONATE; COLOR: CLEAR  
SPRING: STAINLESS STEEL  
CONTACTS: PHOSPHOR BRONZE  
CONTACT PLATING: 15u" MIN. GOLD ON MATING AREA,  
150u" MATTE TIN ON SOLDER TAILS  
PACKAGING: TRAY PACKAGING.  
TEMPERATURE RANGE: -40°C TO +85°C



Drafted by: XiaoMing

Dimensions: mm  
Unless otherwise specified, all tolerances are  $\pm 0.25$

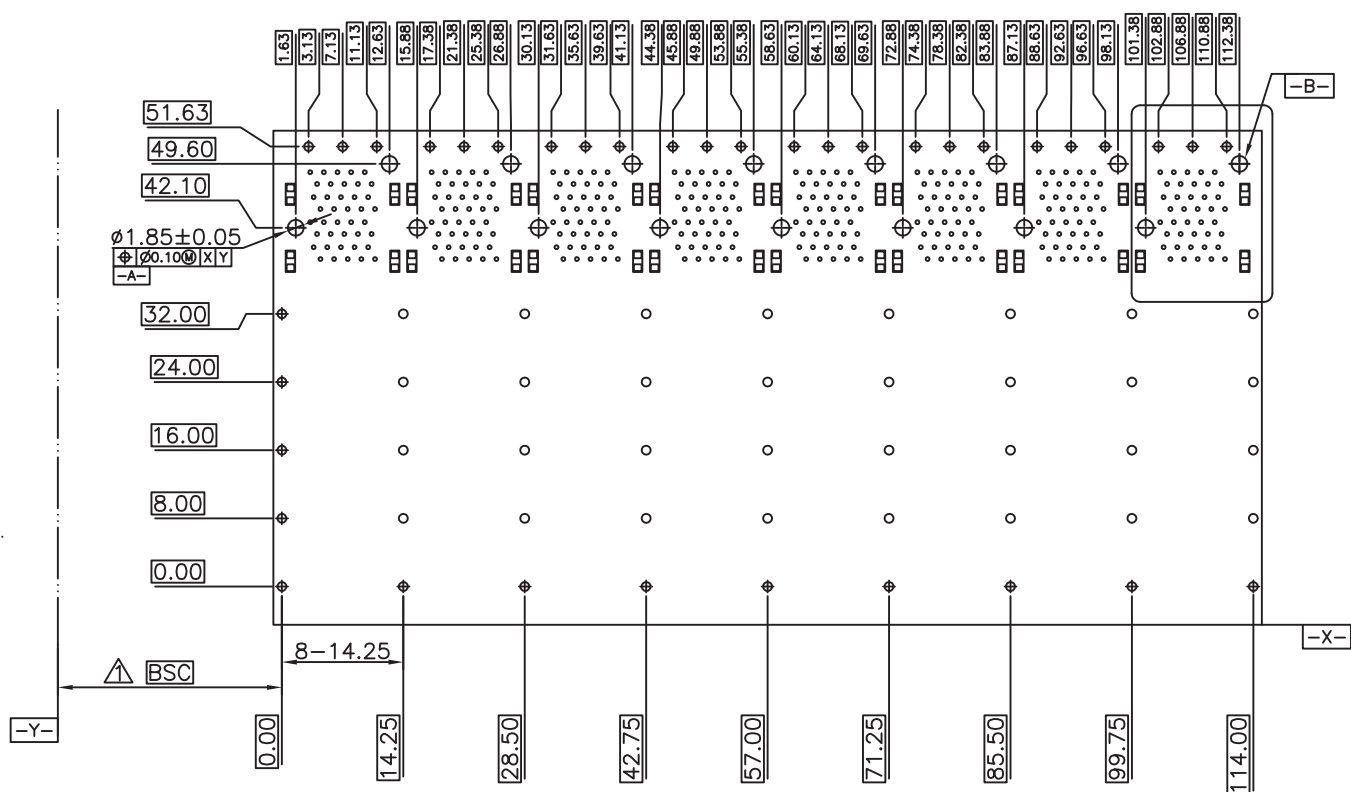
SFP+ Cage 2x8 port with outer light pipes

Approved By: TSLEE

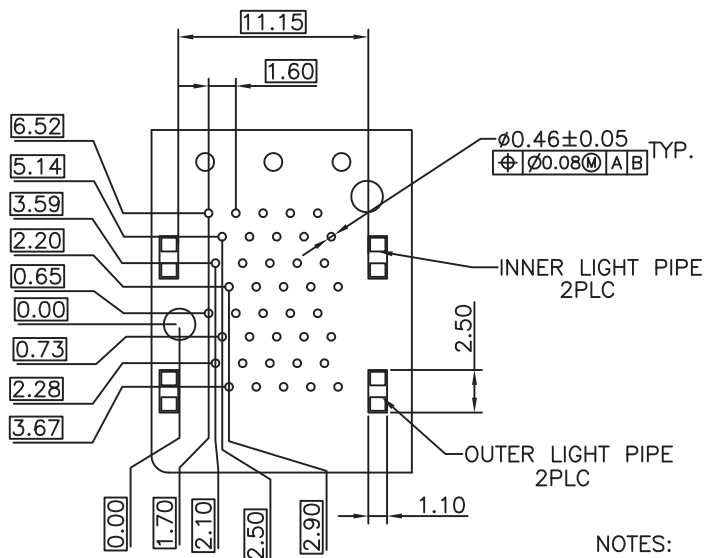
Part No: SFPP028PC15

REV.  
A

SHEET 1 OF 3



### ECOMMENDED PCB CONFIGURATION



### NOTES:

1. DATUM AND BASIC DIMENSIONS ESTABLISHED BY CUSTOMER.
2. 1.05 mm DIAMETER HOLES ARE CHASSIS GROUND (18 HOLES).



Drafted by: XiaoMing

Dimensions: mm

Unless otherwise specified, all tolerances are  $\pm 0.25$

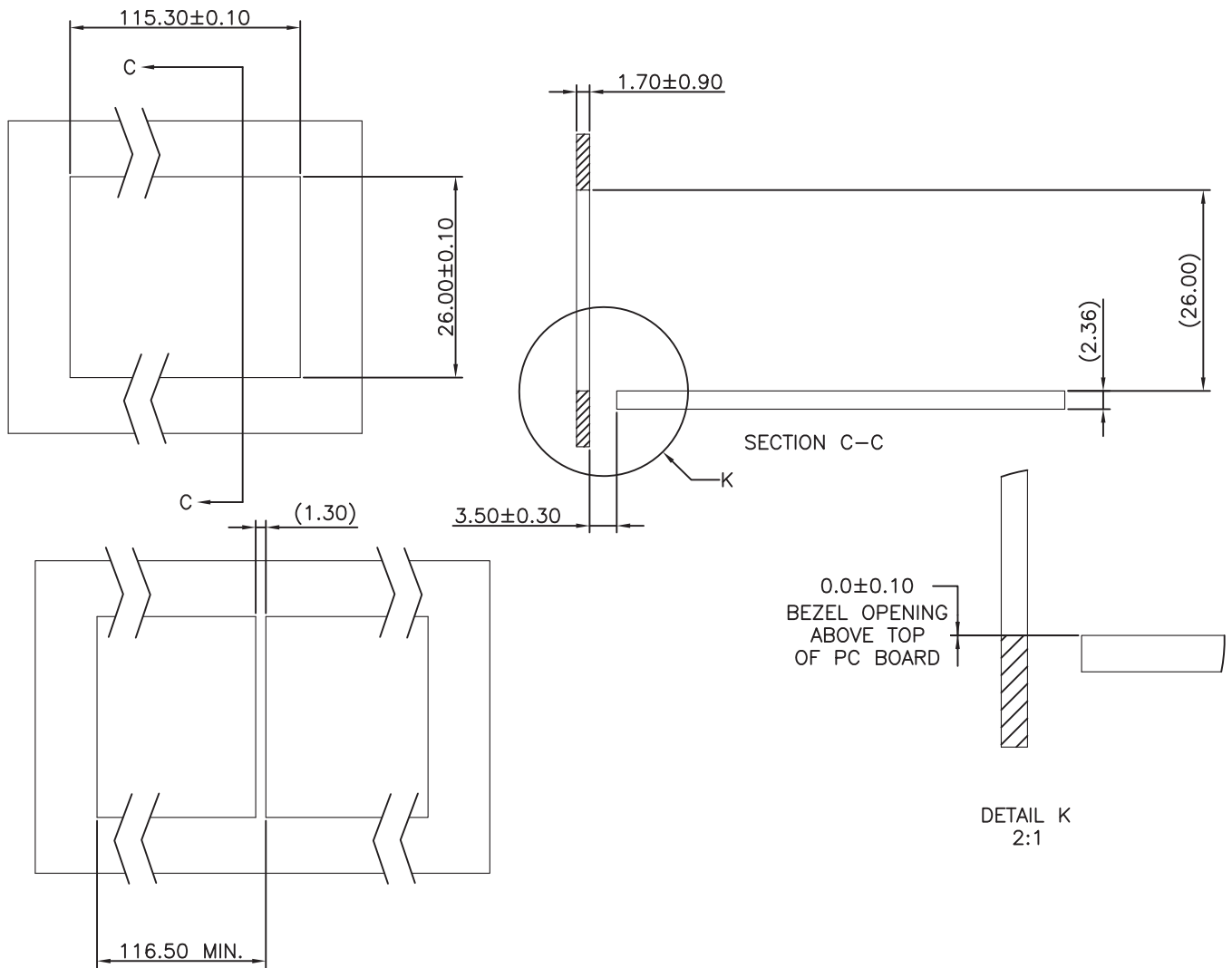
SFP+ Cage 2x8 port with outer light pipes

Approved By: TSLEE

Part No: SFPP028PC15

REV.  
A

SHEET 2 OF 3



RECOMMENDED BEZEL DESIGN



Drafted by: XiaoMing

Dimensions:mm

Unless otherwise specified, all tolerances are  $\pm 0,25$

SFP+ Cage 2x8 port with outer light pipes

Approved By: TSLEE

Part No: SFPP028PC15

REV.  
A

SHEET 3 OF 3