

SPECIFICATIONS

ELECTRICAL:

CURRENT RATING:	1.5AMPS
VOLTAGE RATING:	125VAC
INSULATION RESISTANCE:	>1000M OHMS
WITHSTANDING VOLTAGE :	AC 1000V 50 OR 60HZ 1MIN
CONTACT RESISTANCE:	<30 MOHMS
OPERATING TEMPERATURE :	-40C TO 85C
STORAGE TEMPERATURE:	-40 TO 85C
INFLAMMABILITY COMPLIANCE:	94V-0
ENVIRONMENTAL:	FLC68
WAVE SOLDERING TEMP.:	265C +/-5

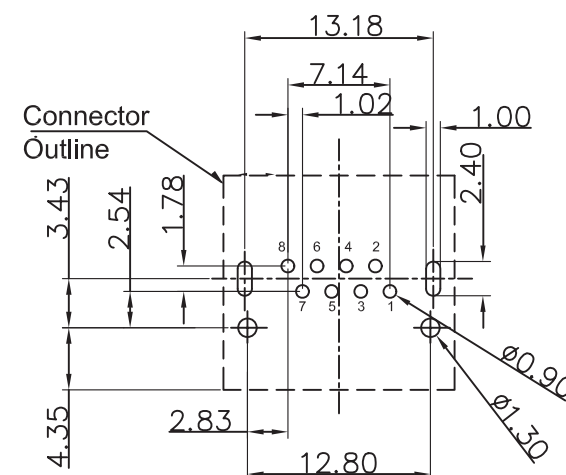
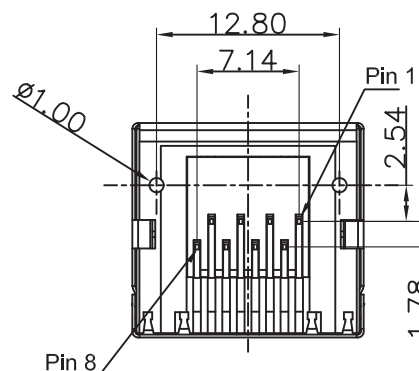
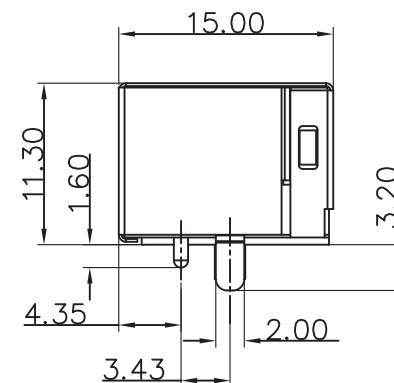
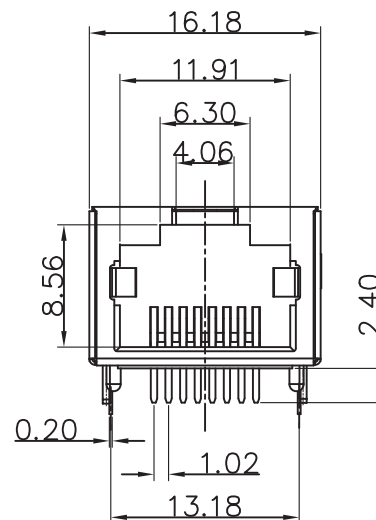
MECHANICAL

MATING FORCE:	5-25N
RETENTION STRENGTH:	≥ 76N
DURABILITY:	≥ 750CYCLE

MATERIAL

HOUSING:	LCP FILLED WITH FIBERGLASS
INSIDE CHIP:	LCP FILLED WITH FIBERGLASS
TERMINAL PARTS UNDERPLATING:	30U MIN NICKEL OVERALL.
RJ TERMINAL:	PH. BRONZE, THICKNESS: 0.3MM FINISH: Fu GOLDEN PLATING IN CONTACT AREA
INPUT TERMINAL:	BRASS THICKNESS: 0.3MM FINISH: 100U INCH MIN TIN
SHIELD:	0.2MM COPPER ZINC ALLOY (7440-50-80) WITH NICKEL PLATED.

MATES WITH MODULAR PLUG CONFORMING TO FCC PART 68, SUBPART F. SUITABLE FOR CAT 5E




SUGGESTED PCB LAYOUT



REV	A	New Release	2/24/17
		Change notice	Date

Tolerance:	.xxx ± 0.10	.x ± 0.38
	.xx ± 0.25	x ± 0.50
Design	XiaoMing	
Check		
Craft	XiaoMing	
Standard		
Approval	TSLee	

Part No.:	WRJ-1100081NL		
Revision	Quality	Proportion	
A		3:1	
Page	1	Total	1

	
Technology & Value	
Drawing No.:	