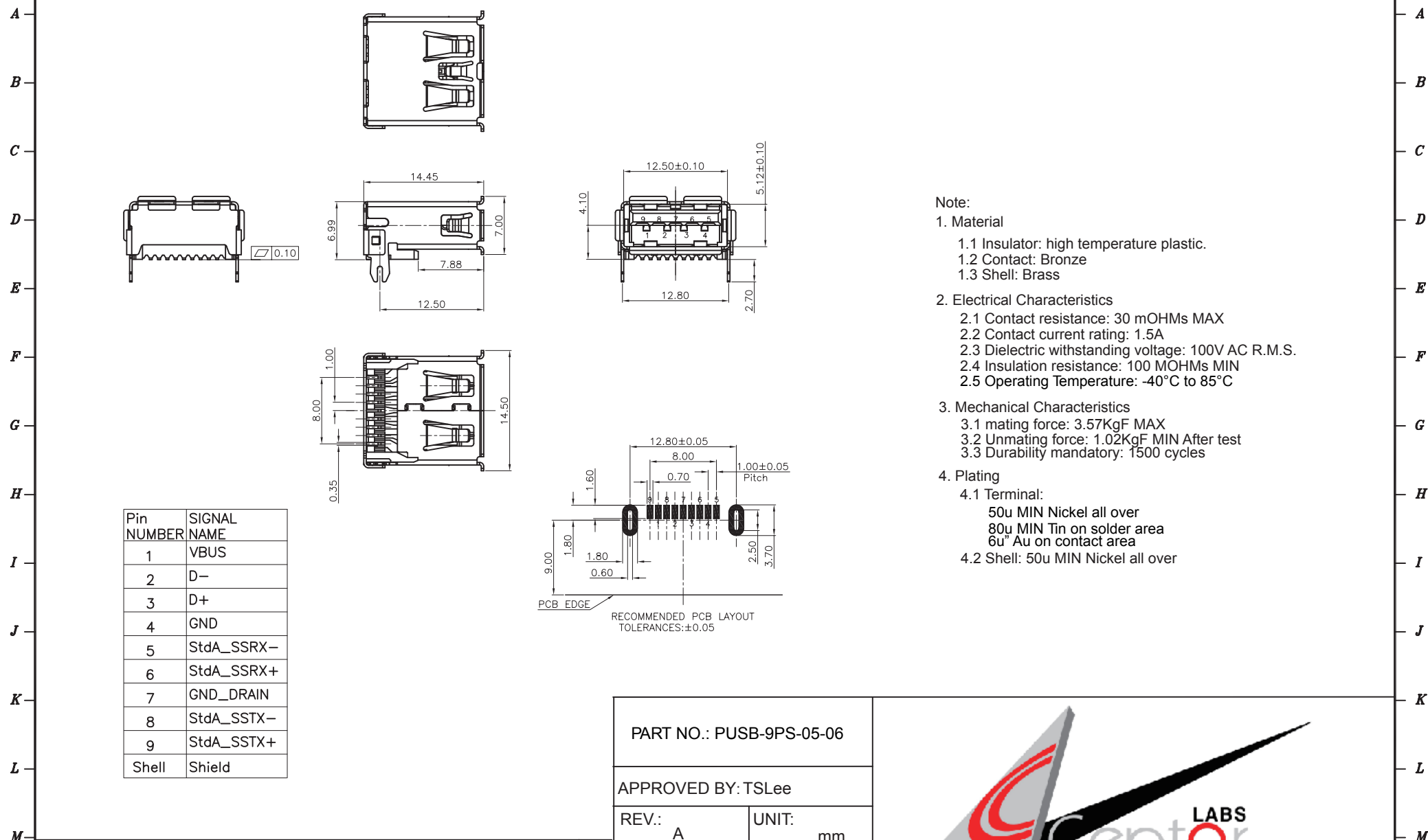
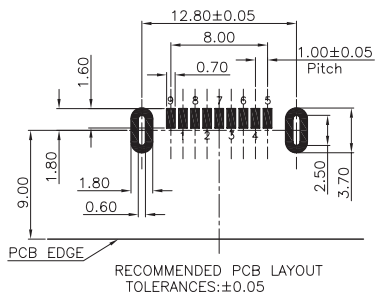


1 2 3 4 5 6 7 8 9 10 11 12 13 14 15 16 17 18 19



Pin NUMBER	SIGNAL NAME
1	VBUS
2	D-
3	D+
4	GND
5	StdA_SSRX-
6	StdA_SSRX+
7	GND_DRAIN
8	StdA_SSTX-
9	StdA_SSTX+
Shell	Shield

- Note:**
- Material
 - Insulator: high temperature plastic.
 - Contact: Bronze
 - Shell: Brass
 - Electrical Characteristics
 - Contact resistance: 30 mOHMs MAX
 - Contact current rating: 1.5A
 - Dielectric withstanding voltage: 100V AC R.M.S.
 - Insulation resistance: 100 MOHMs MIN
 - Operating Temperature: -40°C to 85°C
 - Mechanical Characteristics
 - mating force: 3.57KgF MAX
 - Unmating force: 1.02KgF MIN After test
 - Durability mandatory: 1500 cycles
 - Plating
 - Terminal:
 - 50u MIN Nickel all over
 - 80u MIN Tin on solder area
 - 6u Au on contact area
 - Shell: 50u MIN Nickel all over



PART NO.: PUBS-9PS-05-06	
APPROVED BY: TSLee	
REV.: A	UNIT: mm
DRAFTED BY: XiaoMing	DATE: 2018.3.7



REV.:	CONTENTS	DATE	
A	NEW	2018.3.7	

REVISION HISTORY

1 2 3 4 5 6 7 8 9 10 11 12 13 14 15 16 17 18 19