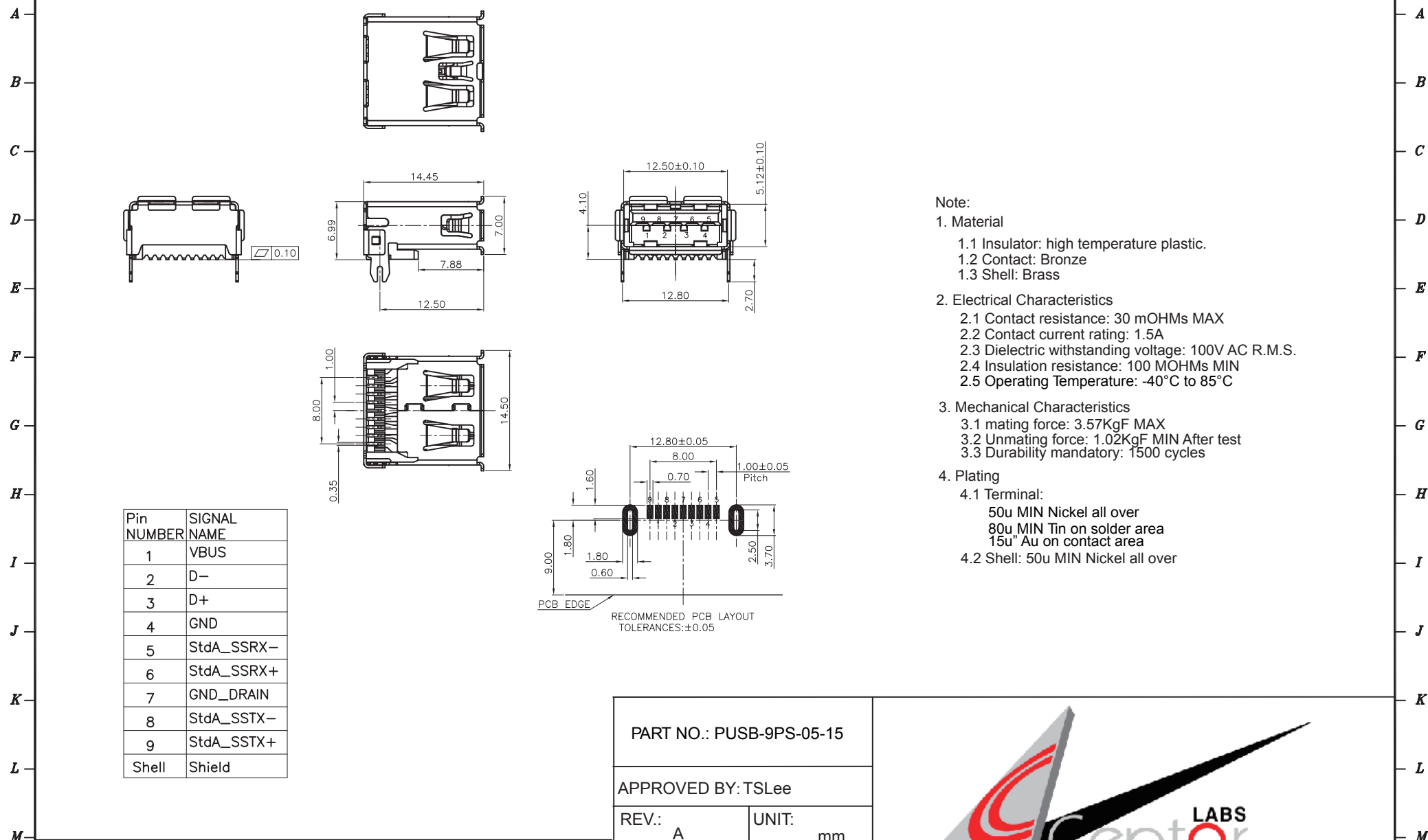


1 2 3 4 5 6 7 8 9 10 11 12 13 14 15 16 17 18 19



Pin NUMBER	SIGNAL NAME
1	VBUS
2	D-
3	D+
4	GND
5	StdA_SSRX-
6	StdA_SSRX+
7	GND_DRAIN
8	StdA_SSTX-
9	StdA_SSTX+
Shell	Shield

Note:

1. Material
 - 1.1 Insulator: high temperature plastic.
 - 1.2 Contact: Bronze
 - 1.3 Shell: Brass
2. Electrical Characteristics
 - 2.1 Contact resistance: 30 mOHMs MAX
 - 2.2 Contact current rating: 1.5A
 - 2.3 Dielectric withstanding voltage: 100V AC R.M.S.
 - 2.4 Insulation resistance: 100 MOHMs MIN
 - 2.5 Operating Temperature: -40°C to 85°C
3. Mechanical Characteristics
 - 3.1 mating force: 3.57KgF MAX
 - 3.2 Unmating force: 1.02KgF MIN After test
 - 3.3 Durability mandatory: 1500 cycles
4. Plating
 - 4.1 Terminal:
 - 50u MIN Nickel all over
 - 80u MIN Tin on solder area
 - 15u Au on contact area
 - 4.2 Shell: 50u MIN Nickel all over

PART NO.: PUBS-9PS-05-15	
APPROVED BY: TSLee	
REV.: A	UNIT: mm
DRAFTED BY: XiaoMing	DATE: 2018.3.7



REV.:	DESCRIPTION	DATE	BY
A	NEW	2018.3.7	
	CONTENTS		

REVISION HISTORY

1 2 3 4 5 6 7 8 9 10 11 12 13 14 15 16 17 18 19