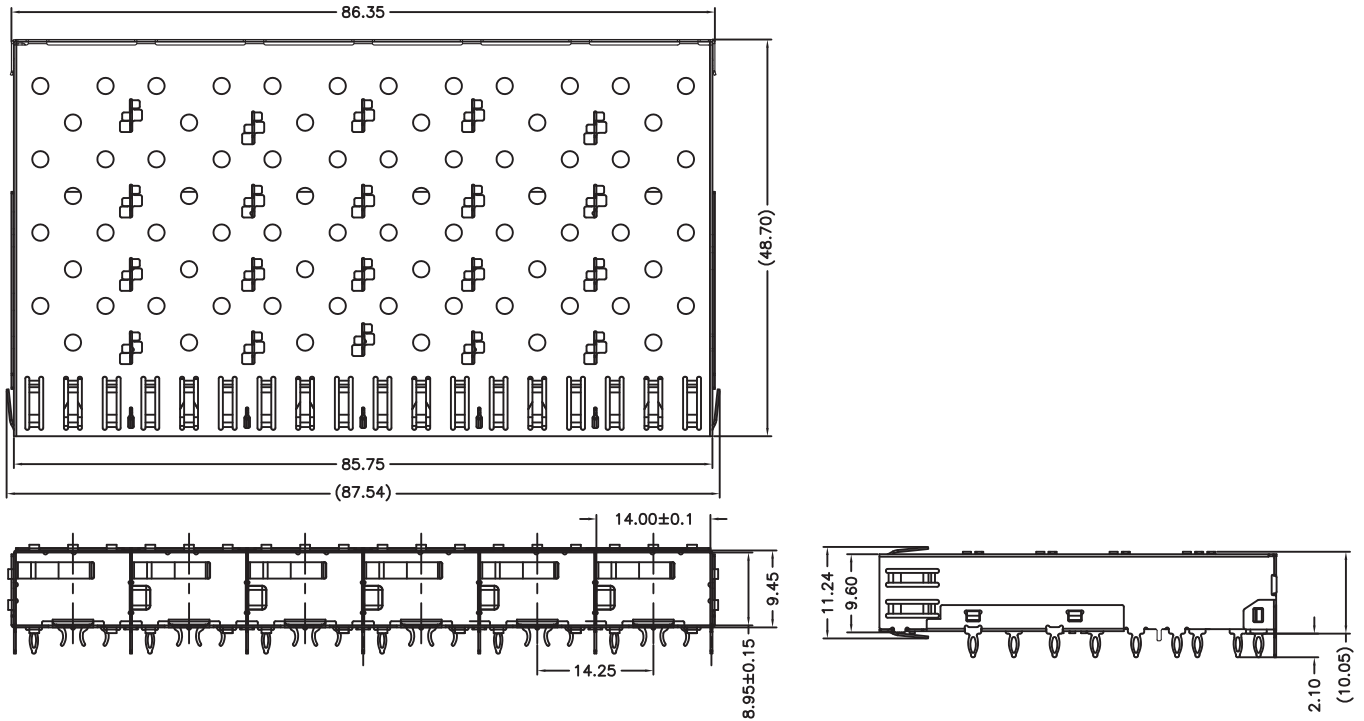



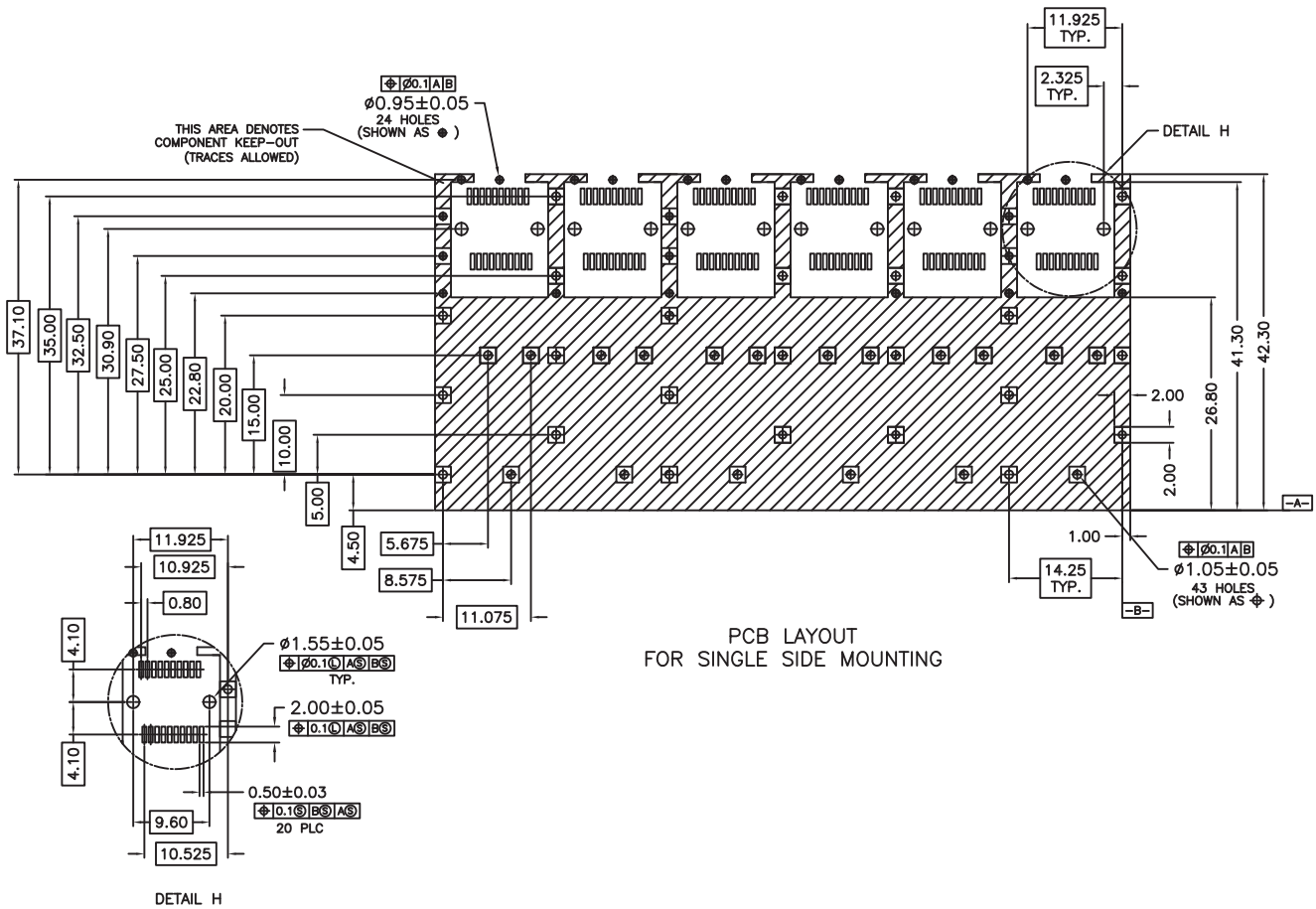
SCHEMATICS



NOTES:

- 1.MATERIAL: NICKEL SILVER, THICKNESS 0.25mm
- 2.PACKAGING: TRAY PACKAGING
- 3.TEMPERATURE:
 OPERATION : -40°C TO +85°C
 STORAGE : -55°C TO +105°C

	Dimensions:mm Unless otherwise specified, all tolerances are ± 0,25	Approved By: TSLEE	
	SFP 1x6 Cage	Part No: SFP016PA	REV. A
Drafted by:XiaoMing	SHEET 1 OF 4		



Drafted by: XiaoMing

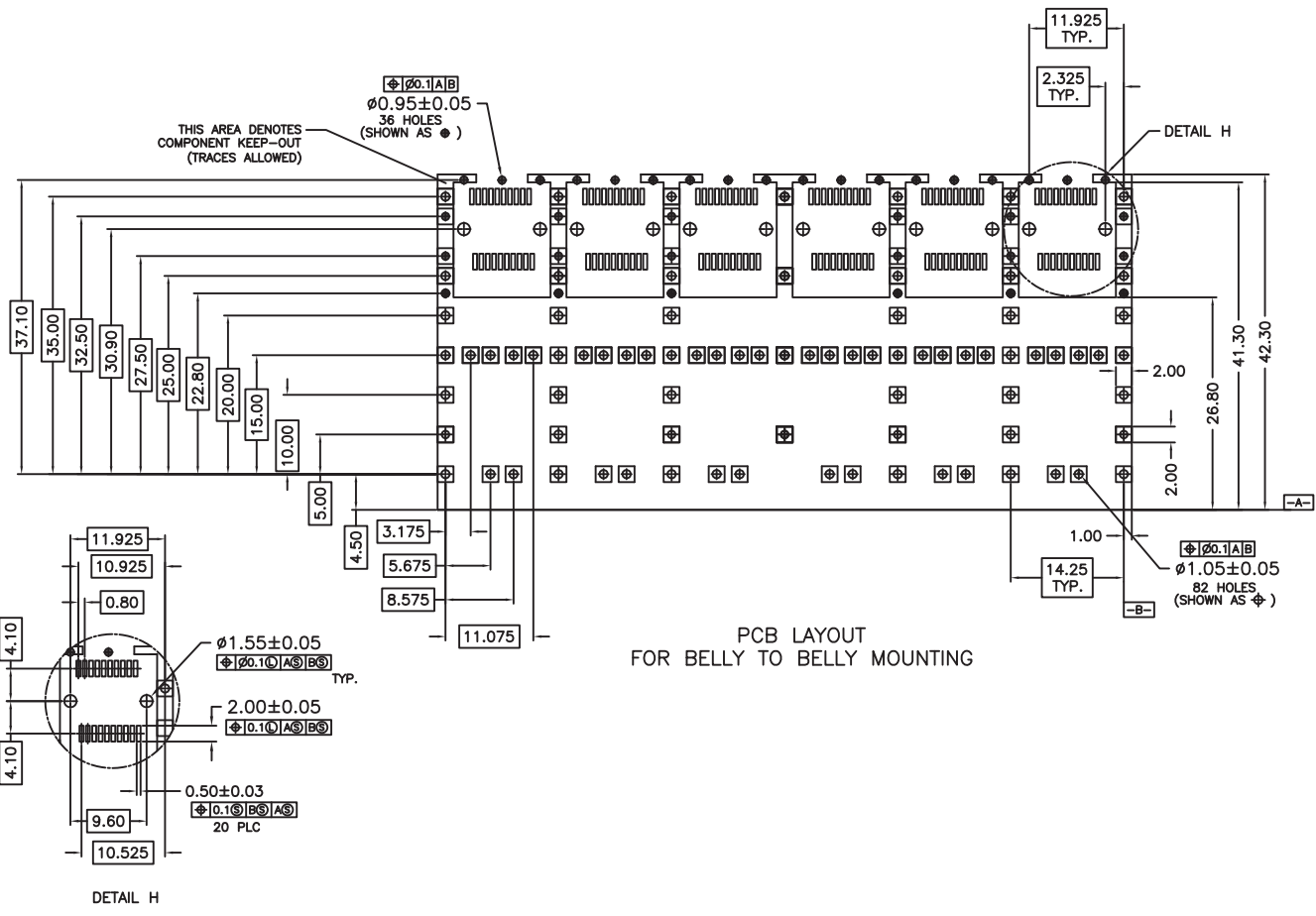
Dimensions:mm
Unless otherwise specified, all tolerances are ± 0,25

SFP 1x6 Cage

Approved By: TSLEE

Part No: SFP016PA

REV.
A



Drafted by: XiaoMing

Dimensions:mm
Unless otherwise specified, all tolerances are ± 0,25

SFP 1x6 cage

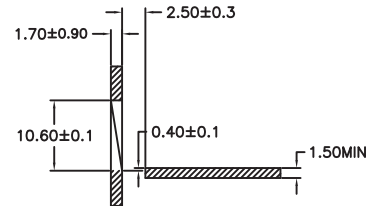
Approved By: TSLEE

Part No: SFP016PA

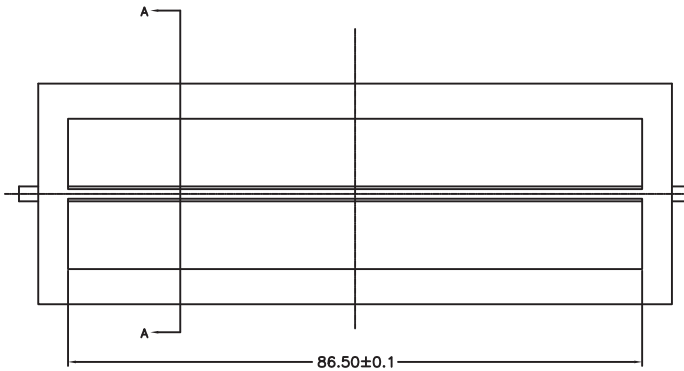
REV.
A



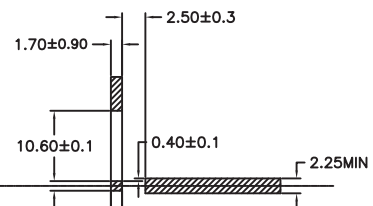
MOUNTED ON PC BOARD
SHOWN THRU RECOMMENDED BEZEL



SECTION A-A



MOUNTED BELLY TO BELLY ON PC BOARD
SHOWN THRU RECOMMENDED BEZEL



SECTION A-A



Drafted by: XiaoMing

Dimensions: mm
Unless otherwise specified, all tolerances are $\pm 0,25$

SFP+ 1x6 Cage

Approved By: TSLEE

Part No: SFP016PA

REV.
A

SHEET 4 OF 4