

# SPECIFICATIONS

## NOTES

### ELECTRICAL:

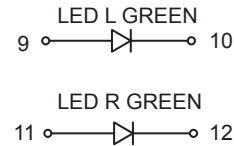
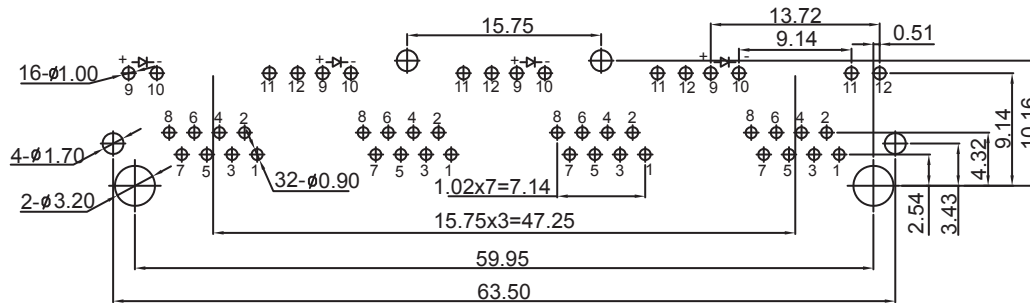
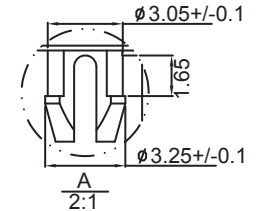
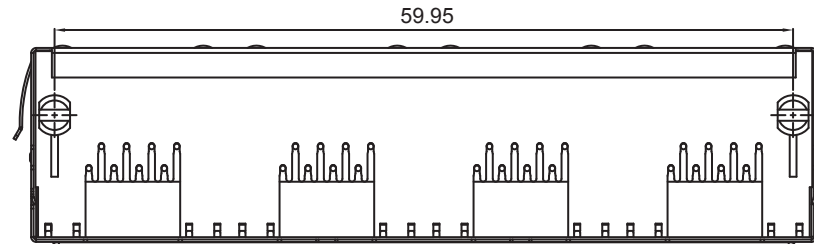
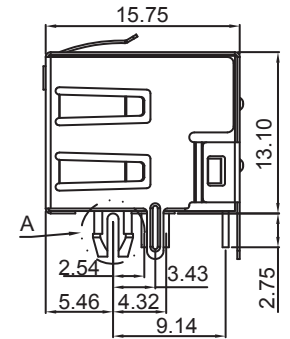
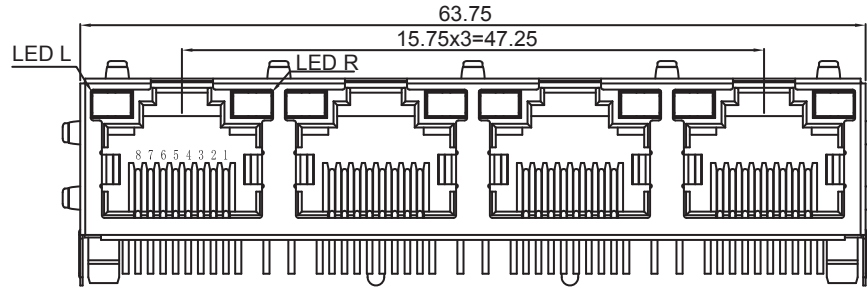
- VOLTAGE RATING : 125 VAC RMS.
- CURRENT RATING : 1.5 AMP.
- CONTACT RESISTANCE : 30 MILLOHMS MAX.
- INSULATION RESISTANCE : 500 MEGOHMS MIN @ 500 VDC.
- DIELECTRIC STRENGTH : 1000 VAC RMS 50Hz or 60Hz, 1MIN.
- COMPATIBLE WITH CAT5
- WITHESTAND VOLTAGE BETWEEN LEDS AND SHIELD: 2KV

### MECHANICAL:

- HOUSING & INSERT MATERIAL : POLYSTER FILLED GLASS UL94V-0
- CONTACT MATERIAL : Fu GOLD PLATING OVER NICKEL
- SHIELD : 0.20 ~ 0.25MM THICKNESS BRASS WITH TIN PLATED.
- MATING/UNMATING FORCE : 2.2KG. F MAX.
- RETENTION STRENGTH : 7.7KG. F MIN BETWEEN JACK AND PLUG.
- OPERATING LIFE : 600 CYCLE MIN.
- JACK CAVITY CONFORMS WITH FCC PART 68 SUBPART F (CONNECTOR).


### ENVIRONMENTAL:

- STORAGE : -40°C ~ +85°C RELATIVE HUMIDITY<70%.
- OPERATION : -40°C ~ +85°C.



SUGGESTED PCB LAYOUT



Tolerance: .xxx ± 0.10 .x ± 0.38 .xx ± 0.25 x ± 0.50		Part No.: WRJ-4110001NL				
Design	XiaoMing	Revision	Quality	Proportion		
Check		A		1:1	Drawing No.:	
Draft	XiaoMing	Page	1	Total		1
Standard						
Approval	TSLee					