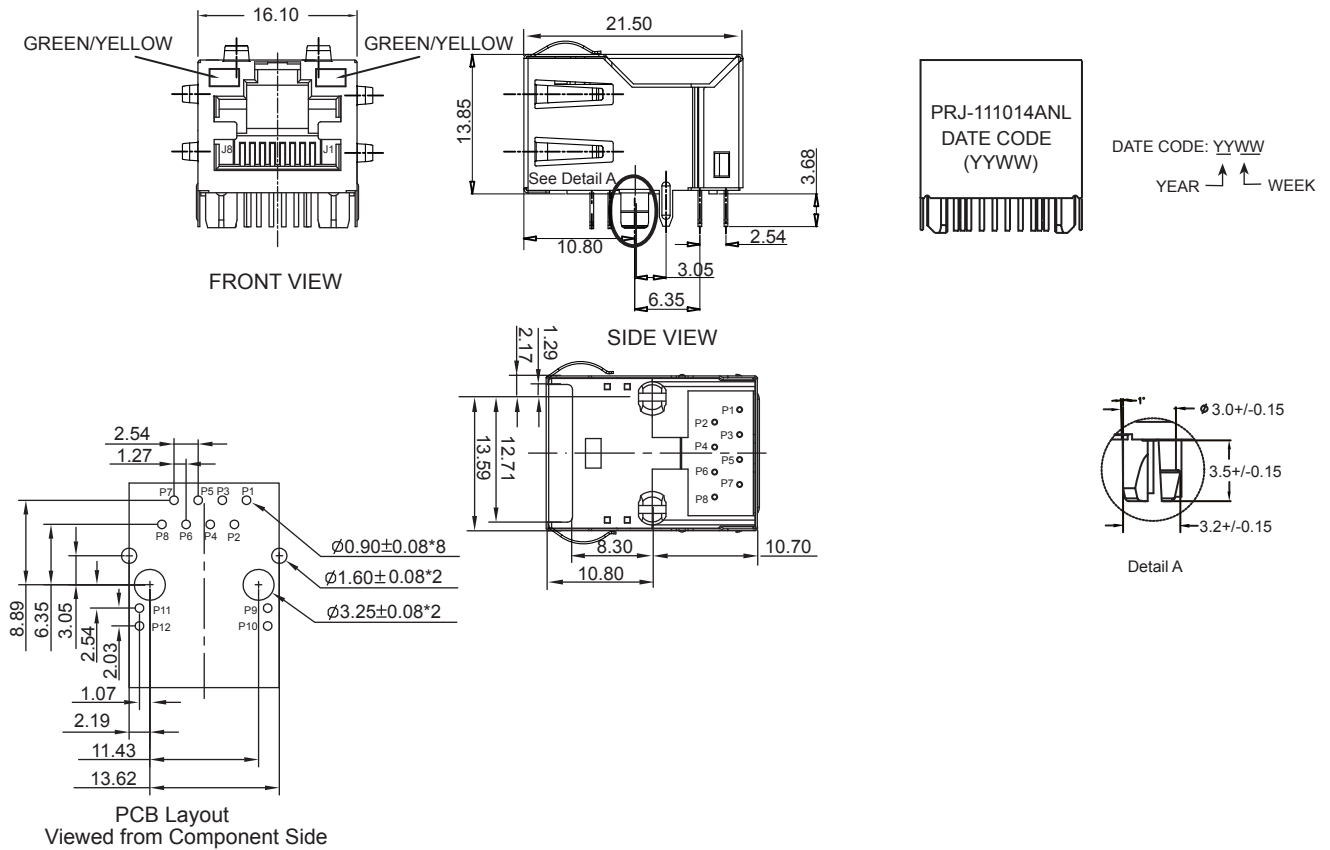


SCHEMATICS



MECHANICAL SPECIFICATIONS:

1. Housing & insert material: Thermal plastic 94V-0
2. Contact material: 0.35mm phosphor bronze 50u gold plating over nickel
3. Shield: 0.20mm thickness brass with nickel plated.
4. Mating/unmating force: 2.2kg. F MAX.
5. Retention strength: 9kg. F MIN between jack and plug.
6. Operating life: 600 cycle MIN.
7. The part is recommended for wave soldering process, peak temp. is 265 degree C, 5 seconds (see the wave soldering curve)
8. Jack cavity conforms with FCC part 68 subpart F (connector).

ENVIRONMENTAL SPECIFICATIONS:

1. Storage Temp. : -40 °C ~ +85 °C Relative humidity<70%.
2. Operation Temp. : -40 °C ~ +85 °C



Dimensions:mm
Unless otherwise specified, all tolerances are ± 0.25

10/100BASE-T, Tab-Up
Shielded, with LEDs

Approved By: TSLEE

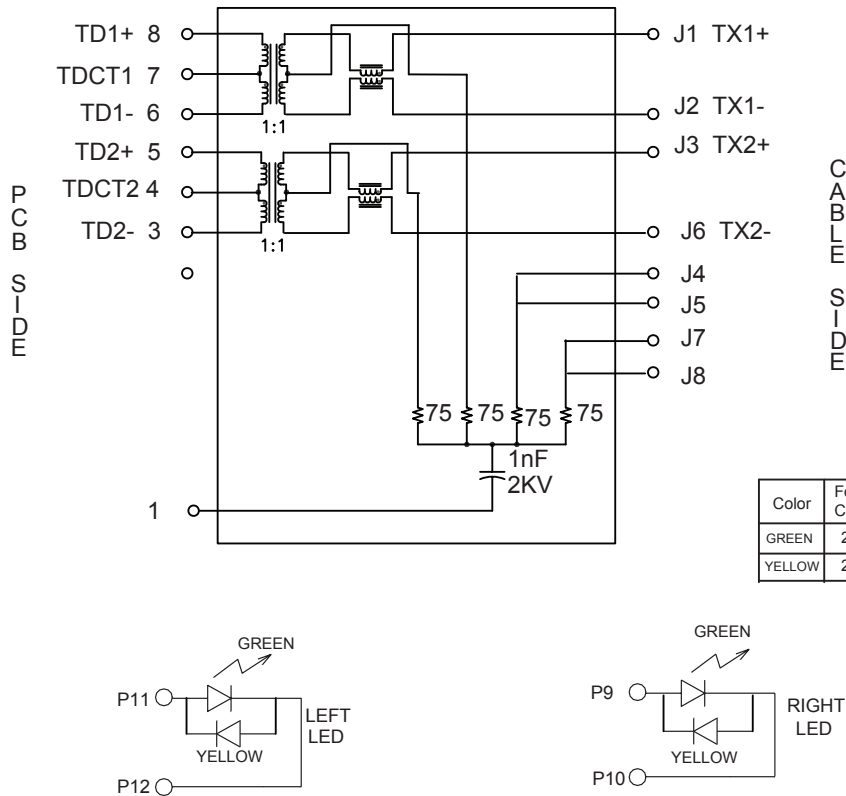
Part No:PRJ-111014ANL

REV.
B

Date: 2020.4.23

SHEET 1 OF 4

ELECTRICAL CIRCUIT



LED Specification

Color	Forward Current(IF)	Forward Voltage(VF)	Dominant Wavelength
GREEN	20mA	2.2V TYP	570 nm TYP
YELLOW	20mA	2.1V TYP	590 nm TYP

ELECTRICAL SPECIFICATIONS @25°C UNLESS OTHERWISE NOTED:

Insertion Loss: 1MHz-100MHz -1.0dB MAX
 Return Loss: 1-30MHz -18.0dB MIN
 30-60MHz -16.0dB MIN
 60-80MHz -12.0dB MIN
 80-100MHz -10.0dB MIN
 Crosstalk: 1-30MHz -40.0dB MIN
 30-80MHz -35.0dB MIN
 80-100MHz -30.0dB MIN
 Common Mode Rejection: 100KHz-100MHz -30.0dB MIN
 Hipot:1500VAC 6S 1mA
 OCL:350uH MIN @ 100KHz 100mV 8mA DC
 DCR: (J1-J2)=1.2 Ohms MAX
 (J3-J6)=1.2 Ohms MAX
 (J4-J5)=1.2 Ohms MAX
 (J7-J8)=1.2 Ohms MAX
 Leakage Inductance:0.35uH MAX @100KHz 100mV
 Capacitor for winding to winding (Cww):35pF MAX @ 100KHz 100mV
 Rated Voltage: 125VAC
 Rise Time (10%-90%): 2.5ns
 Turns ratio: 1:1+/-5%



Drafted by:ZhangXian

Dimensions:mm

Unless otherwise specified, all tolerances are ± 0.25

10/100BASE-T,Tab-Up
Shielded, with LEDs

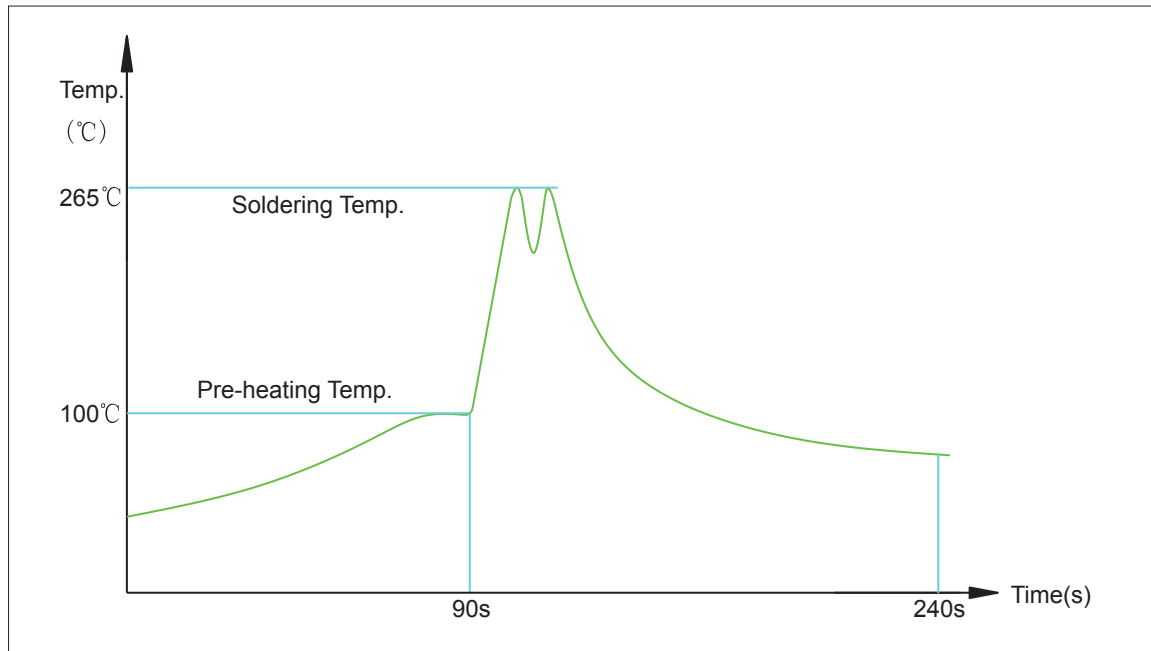
Approved By: TSLEE

Part No:PRJ-111014ANL

REV.
B

SHEET 2 OF 4

Suggested Profile of Wave Solder for RoHS products



1. Maximum soldering temperature: 265°C
2. Maximum soldering time: 5 seconds
3. SnAgCu or SAC, melting point is 219 °C
4. Any plastic components located under the Printed Circuit Board / Printed Wiring Board surface might be very slightly melted by recommended temperature profile. It will however, not affect the connector function. (For example, the plastic pins of the connector)



Drafted by:ZhangXian

Dimensions:mm

Unless otherwise specified, all tolerances are $\pm 0,25$

10/100BASE-T, Tab-Up
Shielded, with LEDs

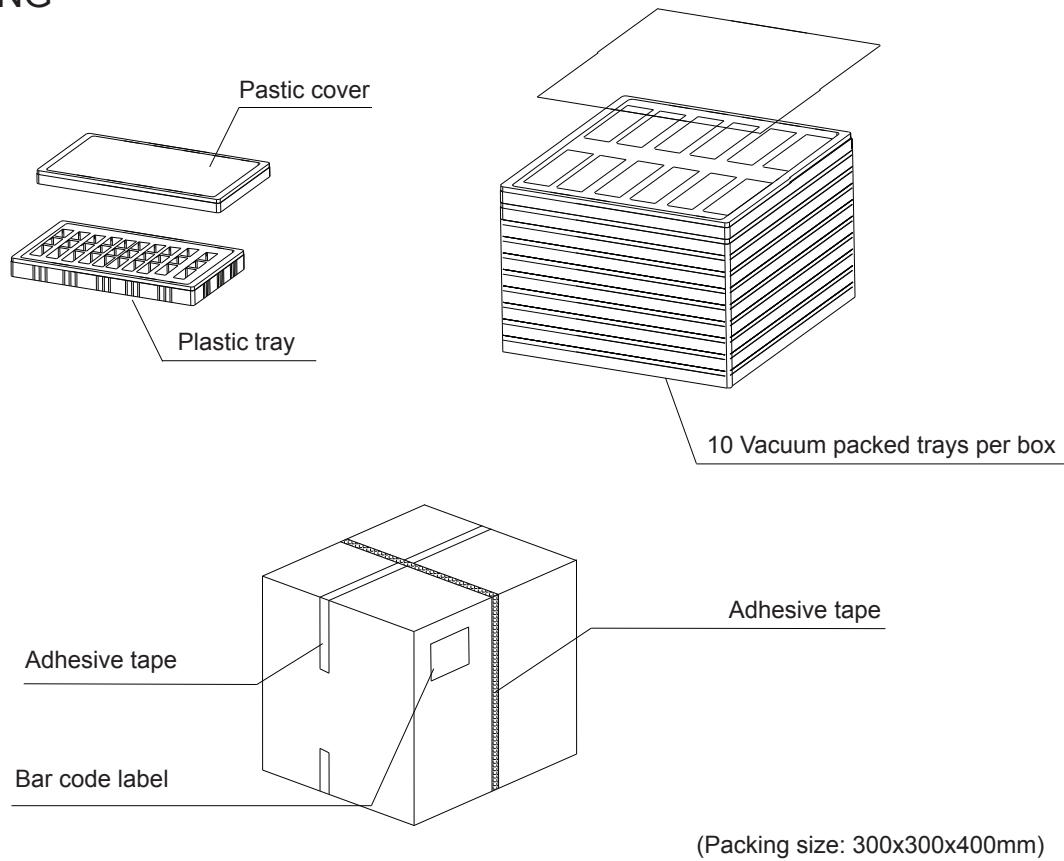
Approved By: TSLEE

Part No:PRJ-111014ANL

REV.
B

SHEET 3 OF 4

PACKING



1. The connectors are placed in a plastic tray in PPC recyclable material. Each tray contains 120 connectors. Each tray has a plastic cover in PPC recyclable material.
2. A carton sheet is placed on each side of the tray. The tray is then vacuum packed in a recyclable PE bag.
3. In each box there are 10 trays placed on top of each other. Each box contains total 1200 connectors.
4. Each box dimension is 300x300x400mm or 0.036CBM with a net weight of approximately 7.8kg and a gross weight of approximately 10.5 kg.



Drafted by:ZhangXian

Dimensions:mm

Unless otherwise specified, all tolerances are $\pm 0,25$

10/100BASE-T, TAB-UP
Shielded, with LEDs

Approved By: TSLEE

Part No:PRJ-111014ANL

REV.
B

SHEET 4 OF 4