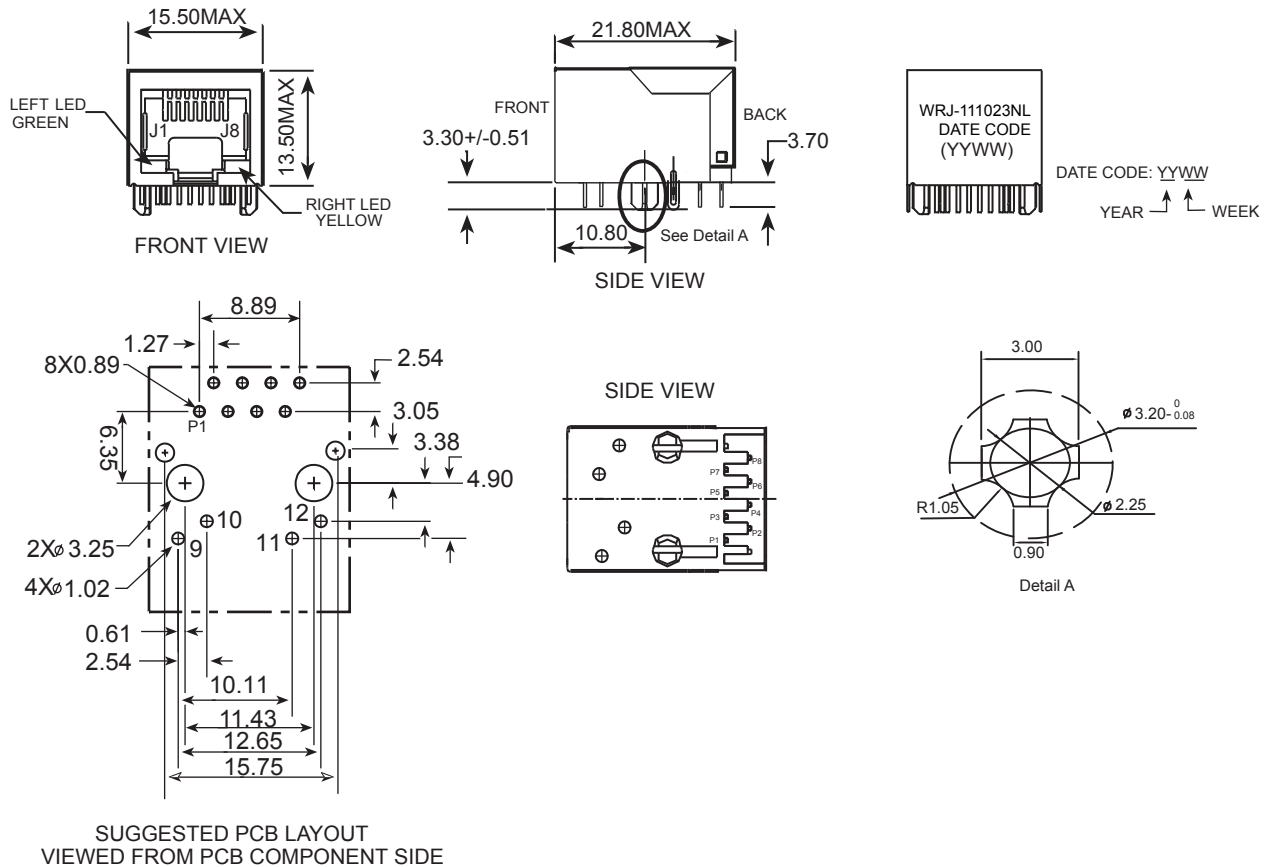


SCHEMATICS



MECHANICAL SPECIFICATIONS:

1. Housing & insert material: LCP 94V-0 or Equivalent Thermal plastic
2. Contact material: 0.35mm phosphor bronze 30u gold plating over nickel
3. Mating/unmating force: 2.2kg. F MAX.
4. Retention strength: 9kg. F MIN between jack and plug.
5. Operating life: 600 cycle MIN.
6. The part is recommended for wave soldering process, peak temp. is 265 degree C, 5 seconds (see the wave soldering curve)
7. Jack cavity conforms with FCC part 68 subpart F (connector).
8. Shield: 0.20 ~ 0.25mm thickness brass with tin plated.

ENVIRONMENTAL SPECIFICATIONS:

1. Storage: -40 °C ~ +85 °C Relative humidity<70%.
2. Operation: -40 °C ~ +85 °C



Dimensions:mm
Unless otherwise specified, all tolerances are ± 0.25

10/100BASE-T, Tab-Down
Single, LEDs

Approved By: TSLEE

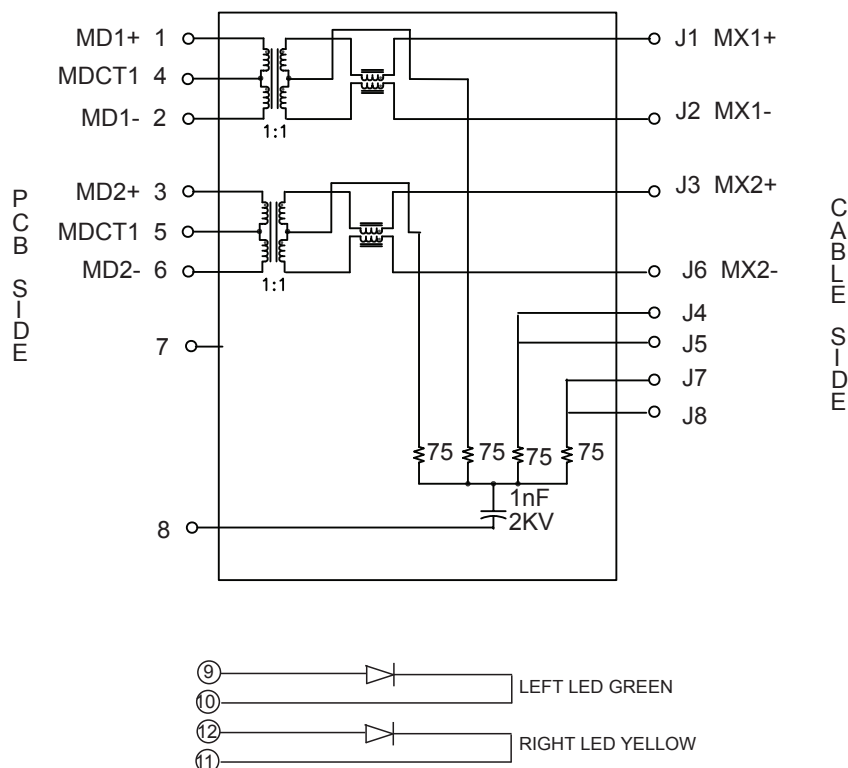
Part No: WRJ-111023NL

REV.
D

DATE: 2020.4.7

SHEET 1 OF 4

ELECTRICAL CIRCUIT



ELECTRICAL SPECIFICATIONS @25°C UNLESS OTHERWISE NOTED:

Insertion Loss: 1-100MHz -1.1dB MAX
 Return Loss: 1-10MHz -20.0dB MIN
 10-30MHz -16.0dB MIN
 30-60MHz -12.0dB MIN
 60-80MHz -10.0dB MIN
 Crosstalk: 1-30MHz -40.0dB MIN
 30-60MHz -35.0dB MIN
 60-100MHz -30.0dB MIN
 Common Mode Rejection: 1-50MHz -30.0dB MIN
 50-100MHz -20.0dB MIN
 Hipot: 1500V AC 6S 1mA
 OCL: 350uH MIN @ 100KHz 100mV 8mA DC
 DCR: (J1-J2)=1.2 Ohms MAX
 (J3-J6)=1.2 Ohms MAX
 Leakage inductance: 0.5uH MAX
 Turn ratios: 1CT:1CT+/-5%



Drafted by: ZhangXian

Dimensions: mm

Unless otherwise specified, all tolerances are ± 0.25

10/100BASE-T, Tab-Down
Single, LEDs

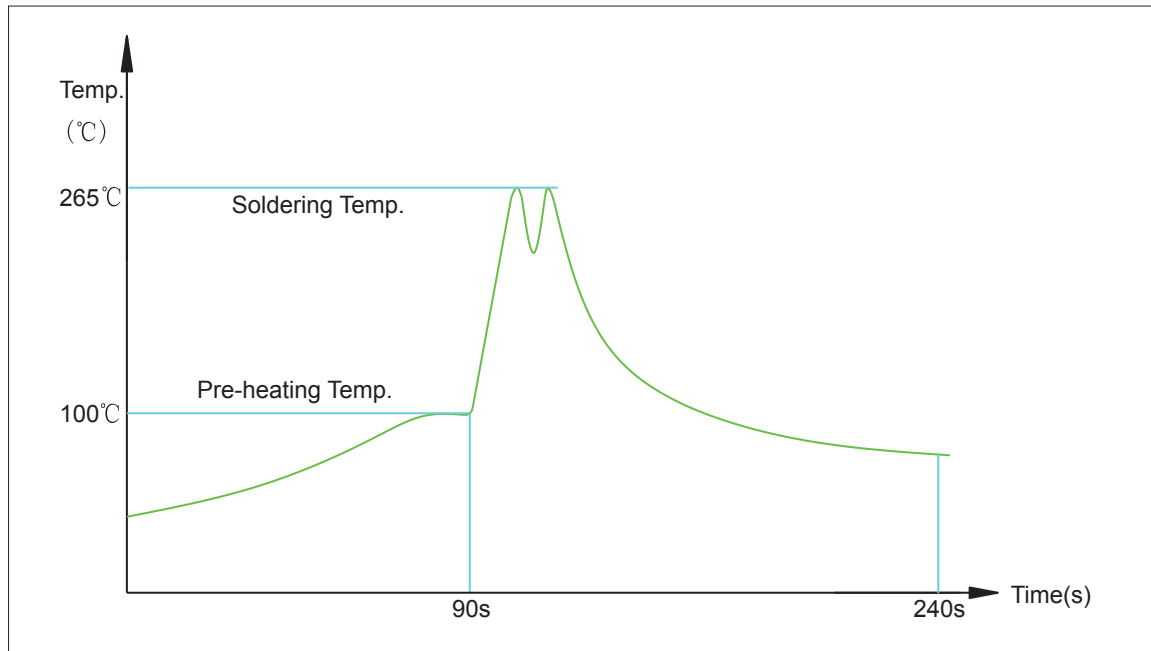
Approved By: TSLEE

Part No: WRJ-111023NL

REV.
D

SHEET 2 OF 4

Suggested Profile of Wave Solder for RoHS products



1. Maximum soldering temperature: 265°C
2. Maximum soldering time: 5 seconds
3. SnAgCu or SAC, melting point is 219 °C
4. Any plastic components located under the Printed Circuit Board / Printed Wiring Board surface might be very slightly melted by recommended temperature profile. It will however, not affect the connector function. (For example, the plastic pins of the connector)



Drafted by:ZhangXian

Dimensions:mm

Unless otherwise specified, all tolerances are $\pm 0,25$

10/100BASE-T, Tab-Down
Single, LEDs

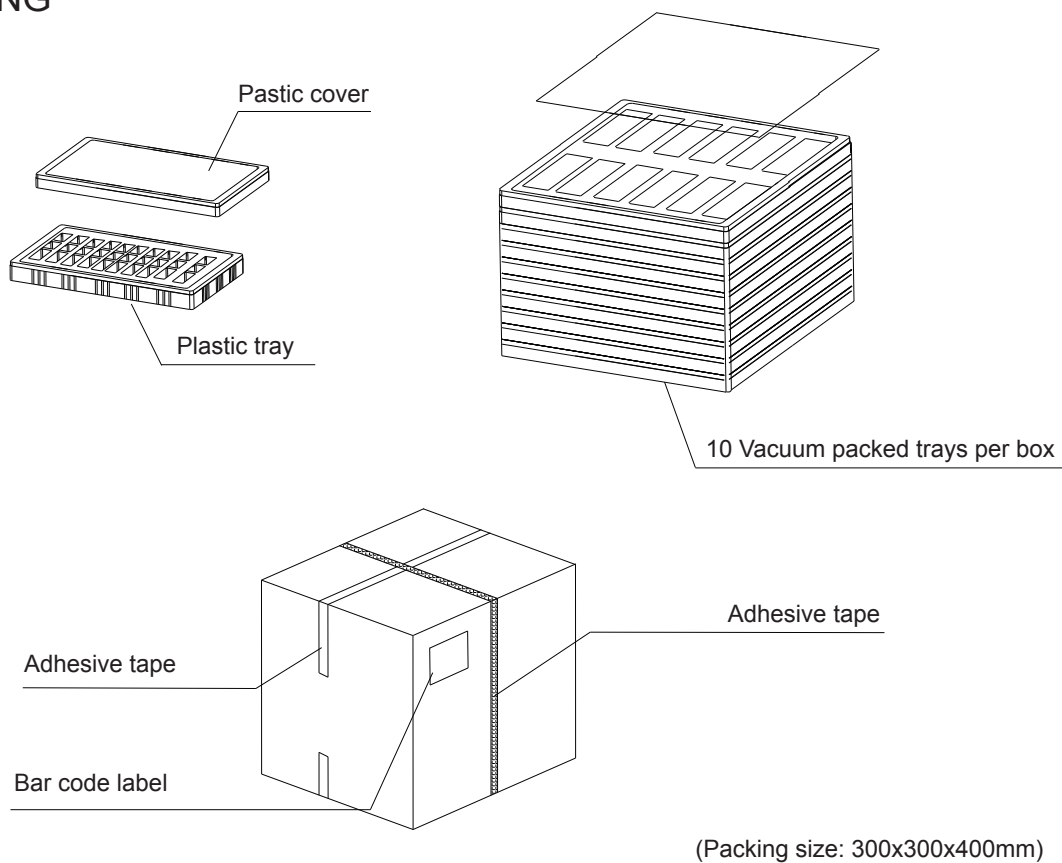
Approved By: TSLEE

Part No: WRJ-111023NL


REV.
D

SHEET 3 OF 4

PACKING



1. The connectors are placed in a plastic tray in PPC recyclable material. Each tray contains 190 connectors. Each tray has a plastic cover in PPC recyclable material.
2. A carton sheet is placed on each side of the tray. The tray is then vacuum packed in a recyclable PE bag.
3. In each box there are 10 trays placed on top of each other. Each box contains total 1900 connectors.
4. Each box dimension is 300x300x400mm or 0.036CBM with a net weight of approximately 9.8kg and a gross weight of approximately 11.5 kg.

	Dimensions:mm Unless otherwise specified, all tolerances are $\pm 0,25$		Approved By: TSLEE	
	10/100BASE-T, Tab-Down Single, LEDs		Part No: WRJ-111023NL	REV. D
	Drafted by:ZhangXian		SHEET 4 OF 4	